



ELECTRONIC COPY

LG775632190
Report verification at igi.org



February 21, 2026
IGI Report Number **LG775632190**
Description **LABORATORY GROWN DIAMOND**
Shape and Cutting Style **SQUARE CUSHION MODIFIED BRILLIANT**
Measurements **9.50 X 9.43 X 6.01 MM**
GRADING RESULTS
Carat Weight **5.53 CARATS**
Color Grade **FANCY PINK BROWN**
Clarity Grade **SI 1**

February 21, 2026
IGI Report Number **LG775632190**
Description **LABORATORY GROWN DIAMOND**
Shape and Cutting Style **SQUARE CUSHION MODIFIED BRILLIANT**
Measurements **9.50 X 9.43 X 6.01 MM**

GRADING RESULTS

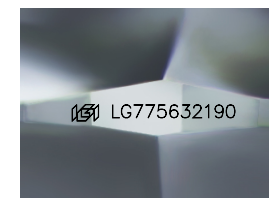
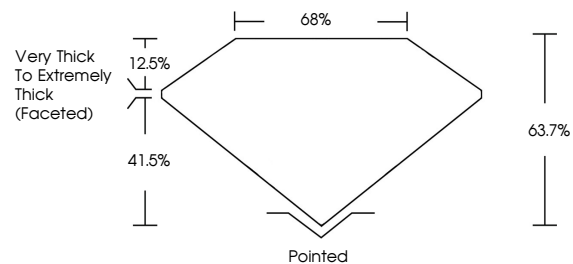
Carat Weight **5.53 CARATS**
Color Grade **FANCY PINK BROWN**
Clarity Grade **SI 1**

ADDITIONAL GRADING INFORMATION

Polish **EXCELLENT**
Symmetry **EXCELLENT**
Fluorescence **SLIGHT**
Inscription(s) **IGI LG775632190**

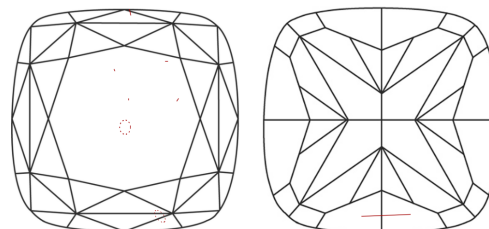
Comments: This Laboratory Grown Diamond was created by Chemical Vapor Deposition (CVD) growth process. Indications of post-growth treatment.

PROPORTIONS



Sample Image Used

CLARITY CHARACTERISTICS



KEY TO SYMBOLS

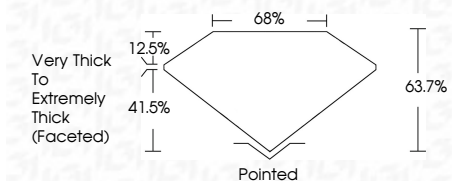
Red symbols indicate internal characteristics.
Green symbols indicate external characteristics.

COLOR

D E F G H I J Faint Very Light Light

CLARITY

FL	IF	VS ¹⁻²	VS ¹⁻²	SI ¹⁻²	I ¹⁻³
Flawless	Internally Flawless	Very Very Slightly Included	Very Slightly Included	Slightly Included	Included



ADDITIONAL GRADING INFORMATION

Polish **EXCELLENT**
Symmetry **EXCELLENT**
Fluorescence **SLIGHT**
Inscription(s) **IGI LG775632190**
Comments: This Laboratory Grown Diamond was created by Chemical Vapor Deposition (CVD) growth process. Indications of post-growth treatment.



February 21, 2026
IGI Report No LG775632190
SQUARE CUSHION MODIFIED BRILLIANT
9.50 X 9.43 X 6.01 MM
5.53 CARATS
FANCY PINK BROWN
SI 1
63.7%
68%
Very Thick to Extremely Thick (Faceted)
Pointed
EXCELLENT
EXCELLENT
SLIGHT
IGI LG775632190

Comments: This Laboratory Grown Diamond was created by Chemical Vapor Deposition (CVD) growth process. Indications of post-growth treatment.