



ELECTRONIC COPY

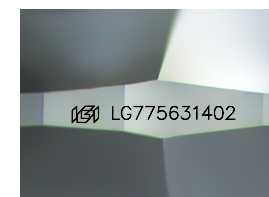
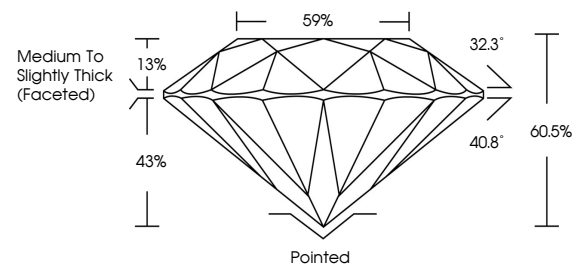
LG775631402
Report verification at igi.org



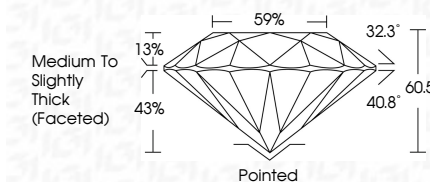
February 21, 2026
IGI Report Number LG775631402
Description LABORATORY GROWN DIAMOND
Shape and Cutting Style ROUND BRILLIANT
Measurements 7.52 - 7.54 X 4.56 MM
GRADING RESULTS
Carat Weight 1.59 CARAT
Color Grade E
Clarity Grade VVS 2
Cut Grade EXCELLENT

February 21, 2026
IGI Report Number LG775631402
Description LABORATORY GROWN DIAMOND
Shape and Cutting Style ROUND BRILLIANT
Measurements 7.52 - 7.54 X 4.56 MM
GRADING RESULTS
Carat Weight 1.59 CARAT
Color Grade E
Clarity Grade VVS 2
Cut Grade EXCELLENT

PROPORTIONS



Sample Image Used



ADDITIONAL GRADING INFORMATION

Polish EXCELLENT
Symmetry EXCELLENT
Fluorescence NONE
Inscription(s) IGI LG775631402

Comments: This Laboratory Grown Diamond was created by Chemical Vapor Deposition (CVD) growth process. Type IIa

COLOR

D E F G H I J Faint Very Light Light

CLARITY

FL IF VS 1-2 VS 1-2 SI 1-2 I 1-3
Flawless Internally Flawless Very Very Slightly Included Very Slightly Included Slightly Included Included

ADDITIONAL GRADING INFORMATION

Polish EXCELLENT
Symmetry EXCELLENT
Fluorescence NONE
Inscription(s) IGI LG775631402
Comments: This Laboratory Grown Diamond was created by Chemical Vapor Deposition (CVD) growth process. Type IIa



IGI



Certified SUSTAINABILITY RATED DIAMOND. All certified diamonds come with an individual certificate, ONLY available at an accredited retailer. SCS GLOBAL SERVICES. FOR THE SUSTAINABILITY RATED CERTIFICATE, SCAN HERE -> [QR code]

February 21, 2026
IGI Report No LG775631402
ROUND BRILLIANT
7.52 - 7.54 X 4.56 MM
1.59 CARAT
E
VVS 2
EXCELLENT
60.5%
59%
Medium To Slightly Thick (Faceted)
Pointed
EXCELLENT
EXCELLENT
NONE
IGI LG775631402
Comments: This Laboratory Grown Diamond was created by Chemical Vapor Deposition (CVD) growth process. Type IIa