



**ELECTRONIC COPY**

LG775630671  
Report verification at igi.org



February 19, 2026

IGI Report Number **LG775630671**

Description **LABORATORY GROWN DIAMOND**

Shape and Cutting Style **ROUND BRILLIANT**

Measurements **6.44 - 6.49 X 4.05 MM**

**GRADING RESULTS**

Carat Weight **1.06 CARAT**

Color Grade **E**

Clarity Grade **VS 1**

Cut Grade **EXCELLENT**

February 19, 2026  
IGI Report Number **LG775630671**  
Description **LABORATORY GROWN DIAMOND**  
Shape and Cutting Style **ROUND BRILLIANT**  
Measurements **6.44 - 6.49 X 4.05 MM**

**GRADING RESULTS**

Carat Weight **1.06 CARAT**

Color Grade **E**

Clarity Grade **VS 1**

Cut Grade **EXCELLENT**

**ADDITIONAL GRADING INFORMATION**

Polish **VERY GOOD**

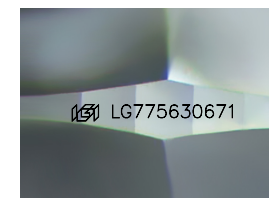
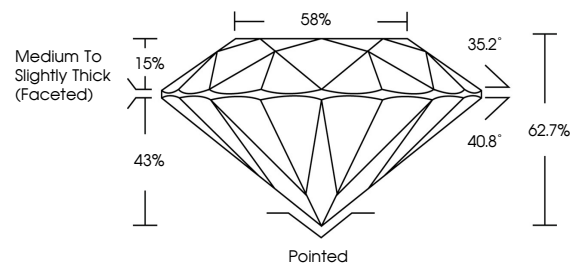
Symmetry **EXCELLENT**

Fluorescence **NONE**

Inscription(s) **IGI LG775630671**

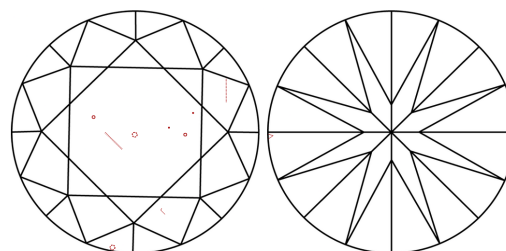
Comments: This Laboratory Grown Diamond was created by Chemical Vapor Deposition (CVD) growth process.  
Type IIa

**PROPORTIONS**



Sample Image Used

**CLARITY CHARACTERISTICS**



**KEY TO SYMBOLS**

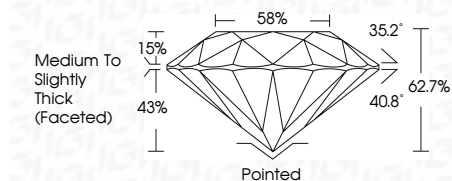
Red symbols indicate internal characteristics.  
Green symbols indicate external characteristics.

**COLOR**

D E F G H I J Faint Very Light Light

**CLARITY**

FL	IF	VS <sup>1-2</sup>	VS <sup>1-2</sup>	SI <sup>1-2</sup>	I <sup>1-3</sup>
Flawless	Internally Flawless	Very Very Slightly Included	Very Slightly Included	Slightly Included	Included



**ADDITIONAL GRADING INFORMATION**

Polish **VERY GOOD**

Symmetry **EXCELLENT**

Fluorescence **NONE**

Inscription(s) **IGI LG775630671**

Comments: This Laboratory Grown Diamond was created by Chemical Vapor Deposition (CVD) growth process.  
Type IIa



**IGI**



February 19, 2026  
IGI Report No LG775630671  
**ROUND BRILLIANT**  
6.44 - 6.49 X 4.05 MM  
1.06 CARAT  
E  
VS 1  
EXCELLENT  
62.7%  
58%  
Medium To Slightly Thick (Faceted)  
Pointed  
VERY GOOD  
EXCELLENT  
NONE  
IGI LG775630671  
Comments: This Laboratory Grown Diamond was created by Chemical Vapor Deposition (CVD) growth process.  
Type IIa