



ELECTRONIC COPY

LG775629848
Report verification at igi.org



February 20, 2026
IGI Report Number **LG775629848**
Description **LABORATORY GROWN DIAMOND**
Shape and Cutting Style **ROUND BRILLIANT**
Measurements **6.36 - 6.40 X 3.91 MM**
GRADING RESULTS
Carat Weight **1.00 CARAT**
Color Grade **FANCY VIVID BLUE**
Clarity Grade **SI 2**
Cut Grade **VERY GOOD**

February 20, 2026
IGI Report Number **LG775629848**
Description **LABORATORY GROWN DIAMOND**
Shape and Cutting Style **ROUND BRILLIANT**
Measurements **6.36 - 6.40 X 3.91 MM**

GRADING RESULTS

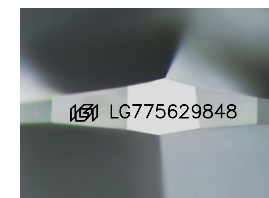
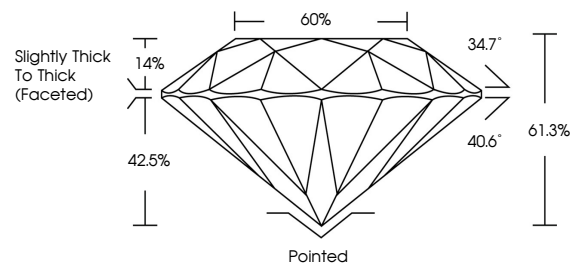
Carat Weight **1.00 CARAT**
Color Grade **FANCY VIVID BLUE**
Clarity Grade **SI 2**
Cut Grade **VERY GOOD**

ADDITIONAL GRADING INFORMATION

Polish **EXCELLENT**
Symmetry **EXCELLENT**
Fluorescence **NONE**
Inscription(s) **IGI LG775629848**

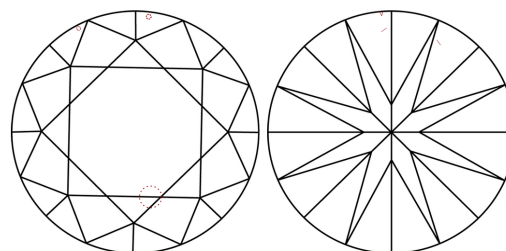
Comments: This Laboratory Grown Diamond was created by Chemical Vapor Deposition (CVD) growth process.
Indications of post-growth treatment.

PROPORTIONS



Sample Image Used

CLARITY CHARACTERISTICS



KEY TO SYMBOLS

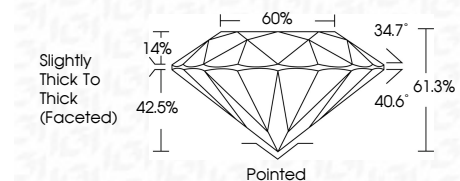
Red symbols indicate internal characteristics.
Green symbols indicate external characteristics.

COLOR

D E F G H I J Faint Very Light Light

CLARITY

FL	IF	VS ¹⁻²	VS ¹⁻²	SI ¹⁻²	I ¹⁻³
Flawless	Internally Flawless	Very Very Slightly Included	Very Slightly Included	Slightly Included	Included



ADDITIONAL GRADING INFORMATION

Polish **EXCELLENT**
Symmetry **EXCELLENT**
Fluorescence **NONE**
Inscription(s) **IGI LG775629848**
Comments: This Laboratory Grown Diamond was created by Chemical Vapor Deposition (CVD) growth process.
Indications of post-growth treatment.



IGI



February 20, 2026
IGI Report No **LG775629848**
ROUND BRILLIANT
6.36 - 6.40 X 3.91 MM
Carat Weight **1.00 CARAT**
Color Grade **FANCY VIVID BLUE**
Clarity Grade **SI 2**
Cut Grade **VERY GOOD**
Depth **61.3%**
Table **60%**
Girdle **Slightly Thick To Thick (Faceted)**
Culet **Pointed**
Polish **EXCELLENT**
Symmetry **EXCELLENT**
Fluorescence **NONE**
Inscription(s) **IGI LG775629848**
Comments: This Laboratory Grown Diamond was created by Chemical Vapor Deposition (CVD) growth process.
Indications of post-growth treatment.