



ELECTRONIC COPY

LG775629834
Report verification at igi.org



February 20, 2026

IGI Report Number **LG775629834**

Description **LABORATORY GROWN DIAMOND**

Shape and Cutting Style **ROUND BRILLIANT**

Measurements **6.42 - 6.47 X 3.75 MM**

GRADING RESULTS

Carat Weight **1.00 CARAT**

Color Grade **FANCY VIVID BLUE**

Clarity Grade **VVS 2**

Cut Grade **GOOD**

February 20, 2026
IGI Report Number **LG775629834**
Description **LABORATORY GROWN DIAMOND**
Shape and Cutting Style **ROUND BRILLIANT**
Measurements **6.42 - 6.47 X 3.75 MM**

GRADING RESULTS

Carat Weight **1.00 CARAT**

Color Grade **FANCY VIVID BLUE**

Clarity Grade **VVS 2**

Cut Grade **GOOD**

ADDITIONAL GRADING INFORMATION

Polish **EXCELLENT**

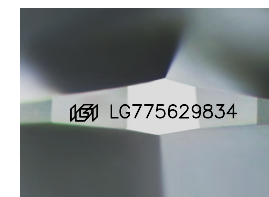
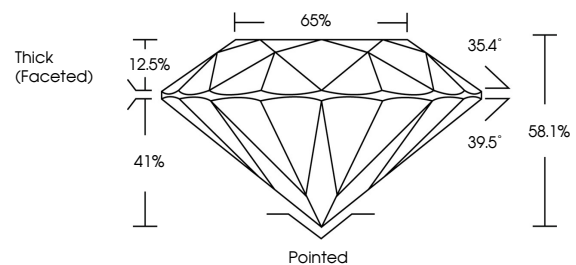
Symmetry **EXCELLENT**

Fluorescence **NONE**

Inscription(s) **LG775629834**

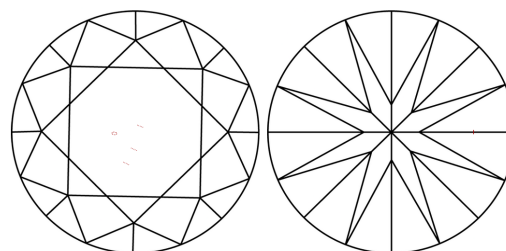
Comments: This Laboratory Grown Diamond was created by Chemical Vapor Deposition (CVD) growth process.
Indications of post-growth treatment.

PROPORTIONS



Sample Image Used

CLARITY CHARACTERISTICS



KEY TO SYMBOLS

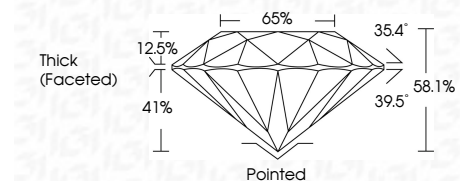
Red symbols indicate internal characteristics.
Green symbols indicate external characteristics.

COLOR

D E F G H I J Faint Very Light Light

CLARITY

FL	IF	VVS ¹⁻²	VS ¹⁻²	SI ¹⁻²	I ¹⁻³
Flawless	Internally Flawless	Very Very Slightly Included	Very Slightly Included	Slightly Included	Included



ADDITIONAL GRADING INFORMATION

Polish **EXCELLENT**

Symmetry **EXCELLENT**

Fluorescence **NONE**

Inscription(s) **LG775629834**

Comments: This Laboratory Grown Diamond was created by Chemical Vapor Deposition (CVD) growth process.
Indications of post-growth treatment.



February 20, 2026
IGI Report No LG775629834
ROUND BRILLIANT
6.42 - 6.47 X 3.75 MM
1.00 CARAT
FANCY VIVID BLUE
VVS 2
GOOD
65%
58.1%
41%
Thick (Faceted)
Pointed
EXCELLENT
EXCELLENT
NONE
IGI LG775629834
Comments: This Laboratory Grown Diamond was created by Chemical Vapor Deposition (CVD) growth process.
Indications of post-growth treatment.