



ELECTRONIC COPY

LG775628857
Report verification at igi.org



February 24, 2026

IGI Report Number **LG775628857**

Description **LABORATORY GROWN DIAMOND**

Shape and Cutting Style **EMERALD CUT**

Measurements **12.51 X 8.67 X 6.19 MM**

GRADING RESULTS

Carat Weight **7.00 CARATS**

Color Grade **FANCY VIVID RED**

Clarity Grade **VS 2**

LABORATORY GROWN DIAMOND REPORT

February 24, 2026

IGI Report Number **LG775628857**

Description **LABORATORY GROWN DIAMOND**

Shape and Cutting Style **EMERALD CUT**

Measurements **12.51 X 8.67 X 6.19 MM**

GRADING RESULTS

Carat Weight **7.00 CARATS**

Color Grade **FANCY VIVID RED**

Clarity Grade **VS 2**

ADDITIONAL GRADING INFORMATION

Polish **EXCELLENT**

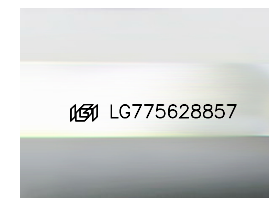
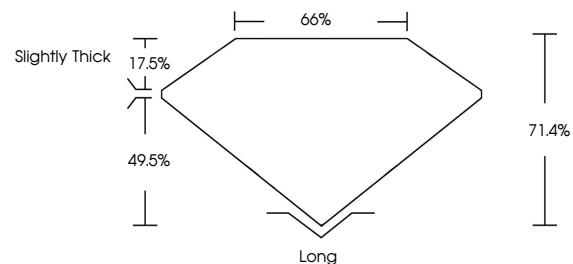
Symmetry **EXCELLENT**

Fluorescence **SLIGHT**

Inscription(s) **IGI LG775628857**

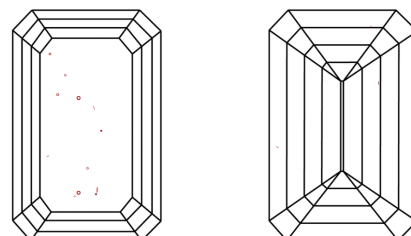
Comments: This Laboratory Grown Diamond was created by Chemical Vapor Deposition (CVD) growth process. Indications of post-growth treatment.

PROPORTIONS



Sample Image Used

CLARITY CHARACTERISTICS



KEY TO SYMBOLS

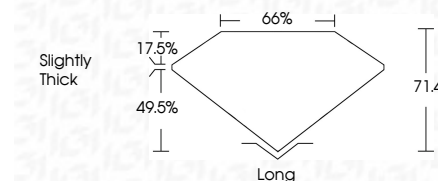
Red symbols indicate internal characteristics.
Green symbols indicate external characteristics.

COLOR

D E F G H I J Faint Very Light Light

CLARITY

FL	IF	VS ¹⁻²	VS ¹⁻²	SI ¹⁻²	I ¹⁻³
Flawless	Internally Flawless	Very Very Slightly Included	Very Slightly Included	Slightly Included	Included



ADDITIONAL GRADING INFORMATION

Polish **EXCELLENT**

Symmetry **EXCELLENT**

Fluorescence **SLIGHT**

Inscription(s) **IGI LG775628857**

Comments: This Laboratory Grown Diamond was created by Chemical Vapor Deposition (CVD) growth process. Indications of post-growth treatment.



February 24, 2026
IGI Report No LG775628857
EMERALD CUT

7.00 CARATS
Carat Weight
FANCY VIVID RED
Color Grade

VS 2
Clarity Grade

71.4%
table
66%
width
Slightly Thick

Long
Culet
EXCELLENT
Polish
EXCELLENT
Symmetry
SLIGHT
Fluorescence
IGI LG775628857
Inscription(s)

Comments: This Laboratory Grown Diamond was created by Chemical Vapor Deposition (CVD) growth process. Indications of post-growth treatment.