



ELECTRONIC COPY

LG775628100
Report verification at igi.org



February 20, 2026
IGI Report Number **LG775628100**
Description **LABORATORY GROWN DIAMOND**
Shape and Cutting Style **ROUND BRILLIANT**
Measurements **6.42 - 6.46 X 3.90 MM**
GRADING RESULTS
Carat Weight **1.00 CARAT**
Color Grade **FANCY INTENSE BLUE**
Clarity Grade **VS 1**
Cut Grade **EXCELLENT**

February 20, 2026
IGI Report Number **LG775628100**
Description **LABORATORY GROWN DIAMOND**
Shape and Cutting Style **ROUND BRILLIANT**
Measurements **6.42 - 6.46 X 3.90 MM**

GRADING RESULTS

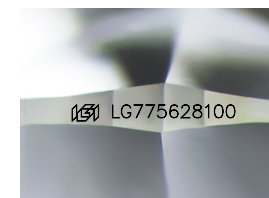
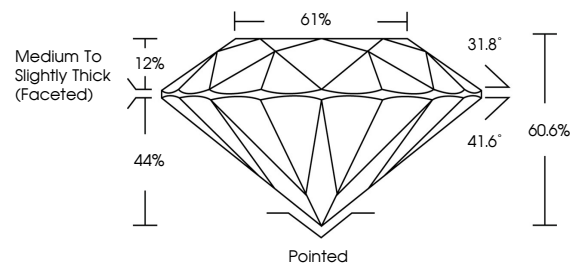
Carat Weight **1.00 CARAT**
Color Grade **FANCY INTENSE BLUE**
Clarity Grade **VS 1**
Cut Grade **EXCELLENT**

ADDITIONAL GRADING INFORMATION

Polish **EXCELLENT**
Symmetry **EXCELLENT**
Fluorescence **NONE**
Inscription(s) **IGI LG775628100**

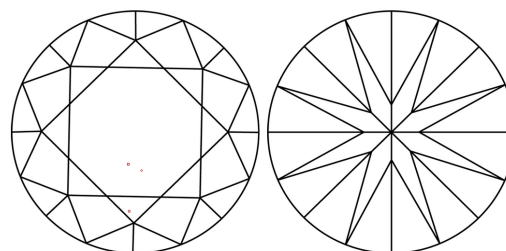
Comments: This Laboratory Grown Diamond was created by Chemical Vapor Deposition (CVD) growth process.
Indications of post-growth treatment.

PROPORTIONS



Sample Image Used

CLARITY CHARACTERISTICS



KEY TO SYMBOLS

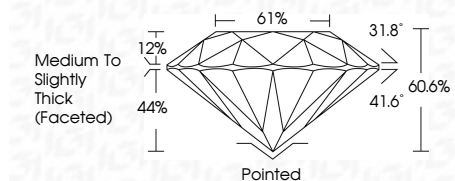
Red symbols indicate internal characteristics.
Green symbols indicate external characteristics.

COLOR

D E F G H I J Faint Very Light Light

CLARITY

FL	IF	VS ¹⁻²	VS ¹⁻²	SI ¹⁻²	I ¹⁻³
Flawless	Internally Flawless	Very Very Slightly Included	Very Slightly Included	Slightly Included	Included



ADDITIONAL GRADING INFORMATION

Polish **EXCELLENT**
Symmetry **EXCELLENT**
Fluorescence **NONE**
Inscription(s) **IGI LG775628100**
Comments: This Laboratory Grown Diamond was created by Chemical Vapor Deposition (CVD) growth process.
Indications of post-growth treatment.



IGI



February 20, 2026
IGI Report No LG775628100
ROUND BRILLIANT
6.42 - 6.46 X 3.90 MM
Carat Weight **1.00 CARAT**
Color Grade **FANCY INTENSE BLUE**
Clarity Grade **VS 1**
Cut Grade **EXCELLENT**
Depth **60.6%**
Table **61%**
Girdle **Medium To Slightly Thick (Faceted)**
Culet **Pointed**
Polish **EXCELLENT**
Symmetry **EXCELLENT**
Fluorescence **NONE**
Inscription(s) **IGI LG775628100**
Comments: This Laboratory Grown Diamond was created by Chemical Vapor Deposition (CVD) growth process.
Indications of post-growth treatment.