



ELECTRONIC COPY

LG775628052
Report verification at igi.org



February 20, 2026

IGI Report Number **LG775628052**

Description **LABORATORY GROWN DIAMOND**

Shape and Cutting Style **ROUND ROSE CUT**

Measurements **10.44 - 10.46 X 2.71 MM**

GRADING RESULTS

Carat Weight **2.34 CARATS**

Color Grade **F**

Clarity Grade **VS 1**

February 20, 2026
IGI Report Number **LG775628052**
Description **LABORATORY GROWN DIAMOND**
Shape and Cutting Style **ROUND ROSE CUT**
Measurements **10.44 - 10.46 X 2.71 MM**

GRADING RESULTS

Carat Weight **2.34 CARATS**

Color Grade **F**

Clarity Grade **VS 1**

ADDITIONAL GRADING INFORMATION

Polish **VERY GOOD**

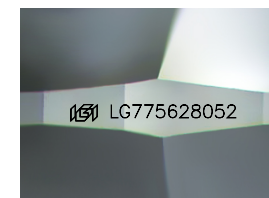
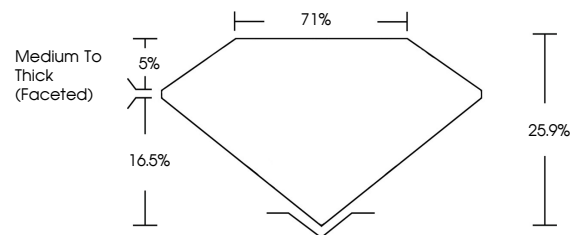
Symmetry **VERY GOOD**

Fluorescence **NONE**

Inscription(s) **IGI LG775628052**

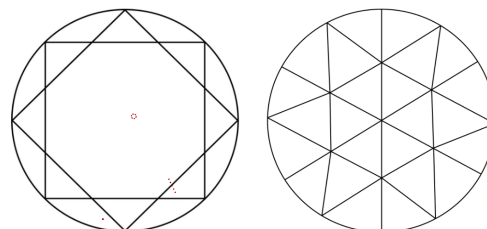
Comments: This Laboratory Grown Diamond was created by Chemical Vapor Deposition (CVD) growth process. Type IIa

PROPORTIONS



Sample Image Used

CLARITY CHARACTERISTICS



KEY TO SYMBOLS

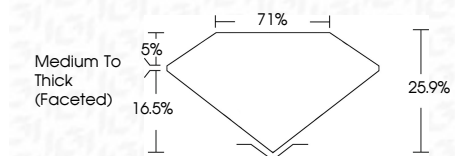
Red symbols indicate internal characteristics.
Green symbols indicate external characteristics.

COLOR

D E F G H I J Faint Very Light Light

CLARITY

FL	IF	VS ¹⁻²	VS ¹⁻²	SI ¹⁻²	I ¹⁻³
Flawless	Internally Flawless	Very Very Slightly Included	Very Slightly Included	Slightly Included	Included



ADDITIONAL GRADING INFORMATION

Polish **VERY GOOD**

Symmetry **VERY GOOD**

Fluorescence **NONE**

Inscription(s) **IGI LG775628052**

Comments: This Laboratory Grown Diamond was created by Chemical Vapor Deposition (CVD) growth process. Type IIa



IGI



February 20, 2026
IGI Report No LG775628052
ROUND ROSE CUT
10.44 - 10.46 X 2.71 MM
2.34 CARATS
F
2.34 CARATS
F
VS 1
71%
Medium To Thick (Faceted)
VERY GOOD
VERY GOOD
NONE
IGI LG775628052
Comments: This Laboratory Grown Diamond was created by Chemical Vapor Deposition (CVD) growth process. Type IIa