



**INTERNATIONAL  
GEMOLOGICAL  
INSTITUTE**

**ELECTRONIC COPY**



February 17, 2026

IGI Report Number **LG775627697**

**SQUARE CUSHION MODIFIED  
BRILLIANT**

**LABORATORY GROWN DIAMOND**

**5.35 X 5.34 X 3.24 MM**

Carat Weight **0.73 CARAT**  
Color Grade **E**  
Clarity Grade **VVS 2**  
Polish **EXCELLENT**  
Symmetry **VERY GOOD**  
Fluorescence **NONE**  
Inscription(s) **IGI LG775627697**

Comments: This Laboratory Grown Diamond was created by Chemical Vapor Deposition (CVD) growth process. Type IIa

**LABORATORY GROWN DIAMOND REPORT**

February 17, 2026

IGI Report Number

**LG775627697**

Description

**LABORATORY GROWN DIAMOND**

Shape and Cutting Style

**SQUARE CUSHION MODIFIED BRILLIANT**

Measurements

**5.35 X 5.34 X 3.24 MM**

**GRADING RESULTS**

Carat Weight

**0.73 CARAT**

Color Grade

**E**

Clarity Grade

**VVS 2**

**ADDITIONAL GRADING INFORMATION**

Polish

**EXCELLENT**

Symmetry

**VERY GOOD**

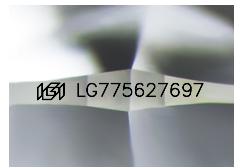
Fluorescence

**NONE**

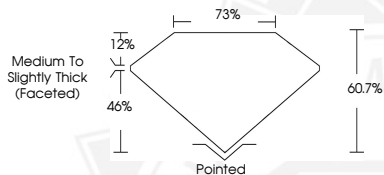
Inscription(s)

**IGI LG775627697**

Comments: This Laboratory Grown Diamond was created by Chemical Vapor Deposition (CVD) growth process. Type IIa



Sample Image Used



February 17, 2026

IGI Report Number **LG775627697**

**SQUARE CUSHION MODIFIED  
BRILLIANT**

**LABORATORY GROWN DIAMOND**

**5.35 X 5.34 X 3.24 MM**

Carat Weight **0.73 CARAT**  
Color Grade **E**  
Clarity Grade **VVS 2**  
Polish **EXCELLENT**  
Symmetry **VERY GOOD**  
Fluorescence **NONE**  
Inscription(s) **IGI LG775627697**

Comments: This Laboratory Grown Diamond was created by Chemical Vapor Deposition (CVD) growth process. Type IIa



THIS DOCUMENT WAS PRODUCED WITH THE FOLLOWING SECURITY MEASURES: SPECIAL DOCUMENT PAPER, INK SCREENS, WATERMARK, BACKGROUND DESIGNS, HOLOGRAM AND OTHER SECURITY FEATURES NOT LISTED AND DO EXCEED DOCUMENT SECURITY INDUSTRY GUIDELINES.

For terms & conditions and to verify this report, please visit [www.igi.org](http://www.igi.org)