



ELECTRONIC COPY

LG775624817
Report verification at igi.org



February 17, 2026

IGI Report Number **LG775624817**

Description **LABORATORY GROWN DIAMOND**

Shape and Cutting Style **ROUND BRILLIANT**

Measurements **7.66 - 7.71 X 4.79 MM**

GRADING RESULTS

Carat Weight **1.74 CARAT**

Color Grade **D**

Clarity Grade **VVS 2**

Cut Grade **EXCELLENT**

February 17, 2026

IGI Report Number **LG775624817**

Description **LABORATORY GROWN DIAMOND**

Shape and Cutting Style **ROUND BRILLIANT**

Measurements **7.66 - 7.71 X 4.79 MM**

GRADING RESULTS

Carat Weight **1.74 CARAT**

Color Grade **D**

Clarity Grade **VVS 2**

Cut Grade **EXCELLENT**

ADDITIONAL GRADING INFORMATION

Polish **EXCELLENT**

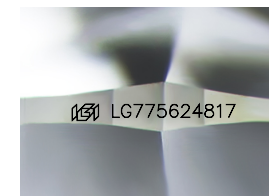
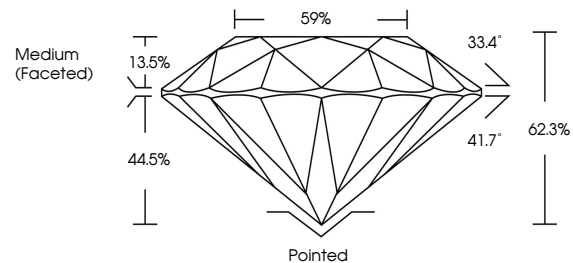
Symmetry **EXCELLENT**

Fluorescence **NONE**

Inscription(s) **IGI LG775624817**

Comments: This Laboratory Grown Diamond was created by Chemical Vapor Deposition (CVD) growth process. Type IIa

PROPORTIONS



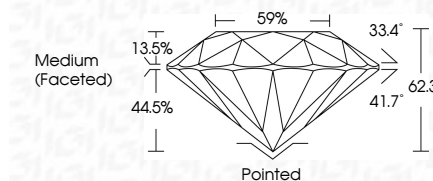
Sample Image Used

COLOR

D E F G H I J Faint Very Light Light

CLARITY

FL	IF	VVS ¹⁻²	VS ¹⁻²	SI ¹⁻²	I ¹⁻³
Flawless	Internally Flawless	Very Very Slightly Included	Very Slightly Included	Slightly Included	Included



ADDITIONAL GRADING INFORMATION

Polish **EXCELLENT**

Symmetry **EXCELLENT**

Fluorescence **NONE**

Inscription(s) **IGI LG775624817**

Comments: This Laboratory Grown Diamond was created by Chemical Vapor Deposition (CVD) growth process. Type IIa



IGI



February 17, 2026	IGI Report No LG775624817	ROUND BRILLIANT	1.74 CARAT	D	VVS 2	EXCELLENT	62.3%	59%	Medium (Faceted)	Pointed	EXCELLENT	EXCELLENT	NONE	IGI LG775624817
7.66 - 7.71 X 4.79 MM	Carat Weight	Color Grade	Clarity Grade	Depth	Table	Girdle	Culet	Polish	Symmetry	Fluorescence	Inscription(s)	Comments: This Laboratory Grown Diamond was created by Chemical Vapor Deposition (CVD) growth process. Type IIa		