



ELECTRONIC COPY

LG775621394
Report verification at igi.org



February 19, 2026

IGI Report Number **LG775621394**

Description **LABORATORY GROWN DIAMOND**

Shape and Cutting Style **ROUND BRILLIANT**

Measurements **8.43 - 8.48 X 5.11 MM**

GRADING RESULTS

Carat Weight **2.26 CARATS**

Color Grade **FANCY VIVID PINK**

Clarity Grade **VS 2**

Cut Grade **IDEAL**

February 19, 2026

IGI Report Number **LG775621394**

Description **LABORATORY GROWN DIAMOND**

Shape and Cutting Style **ROUND BRILLIANT**

Measurements **8.43 - 8.48 X 5.11 MM**

GRADING RESULTS

Carat Weight **2.26 CARATS**

Color Grade **FANCY VIVID PINK**

Clarity Grade **VS 2**

Cut Grade **IDEAL**

ADDITIONAL GRADING INFORMATION

Polish **EXCELLENT**

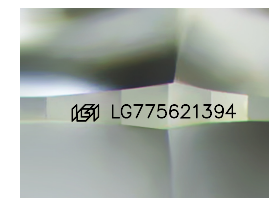
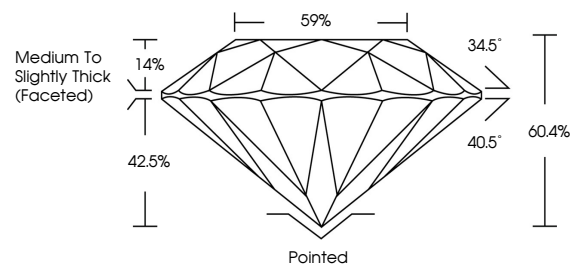
Symmetry **EXCELLENT**

Fluorescence **SLIGHT**

Inscription(s) **LG775621394**

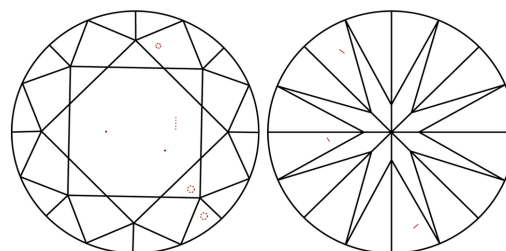
Comments: This Laboratory Grown Diamond was created by Chemical Vapor Deposition (CVD) growth process.
Indications of post-growth treatment.

PROPORTIONS



Sample Image Used

CLARITY CHARACTERISTICS



KEY TO SYMBOLS

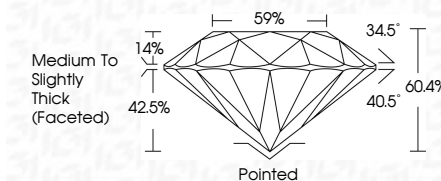
Red symbols indicate internal characteristics.
Green symbols indicate external characteristics.

COLOR

D E F G H I J Faint Very Light Light

CLARITY

| FL | IF | VS ¹⁻² | VS ¹⁻² | SI ¹⁻² | I ¹⁻³ |
|----------|---------------------|-----------------------------|------------------------|-------------------|------------------|
| Flawless | Internally Flawless | Very Very Slightly Included | Very Slightly Included | Slightly Included | Included |



ADDITIONAL GRADING INFORMATION

Polish **EXCELLENT**

Symmetry **EXCELLENT**

Fluorescence **SLIGHT**

Inscription(s) **LG775621394**

Comments: This Laboratory Grown Diamond was created by Chemical Vapor Deposition (CVD) growth process.
Indications of post-growth treatment.



IGI



February 19, 2026
IGI Report No **LG775621394**
ROUND BRILLIANT
8.43 - 8.48 X 5.11 MM
Carat Weight **2.26 CARATS**
Color Grade **FANCY VIVID PINK**
Clarity Grade **VS 2**
Cut Grade **IDEAL**
Depth **42.5%**
Table **14%**
Girdle **59%**
Medium To Slightly Thick (Faceted)
Culet **Pointed**
Polish **EXCELLENT**
Symmetry **EXCELLENT**
Fluorescence **SLIGHT**
Inscription(s) **LG775621394**
Comments: This Laboratory Grown Diamond was created by Chemical Vapor Deposition (CVD) growth process.
Indications of post-growth treatment.