



ELECTRONIC COPY

LG775619971
Report verification at igi.org



February 21, 2026
IGI Report Number **LG775619971**
Description **LABORATORY GROWN DIAMOND**
Shape and Cutting Style **CUT CORNERED
RECTANGULAR MIXED CUT**
Measurements **9.26 X 6.68 X 4.73 MM**
GRADING RESULTS
Carat Weight **2.78 CARATS**
Color Grade **FANCY INTENSE YELLOW**
Clarity Grade **VS 1**

LABORATORY GROWN DIAMOND REPORT

February 21, 2026
IGI Report Number **LG775619971**
Description **LABORATORY GROWN DIAMOND**
Shape and Cutting Style **CUT CORNERED RECTANGULAR
MIXED CUT**
Measurements **9.26 X 6.68 X 4.73 MM**

GRADING RESULTS

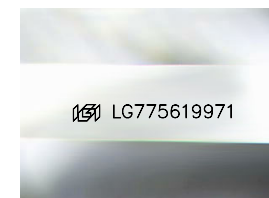
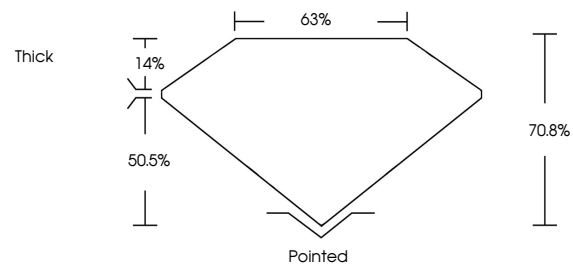
Carat Weight **2.78 CARATS**
Color Grade **FANCY INTENSE YELLOW**
Clarity Grade **VS 1**

ADDITIONAL GRADING INFORMATION

Polish **EXCELLENT**
Symmetry **EXCELLENT**
Fluorescence **NONE**
Inscription(s) **IGI LG775619971**

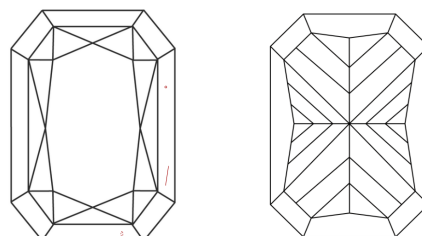
Comments: This Laboratory Grown Diamond was created by Chemical Vapor Deposition (CVD) growth process.

PROPORTIONS



Sample Image Used

CLARITY CHARACTERISTICS



KEY TO SYMBOLS

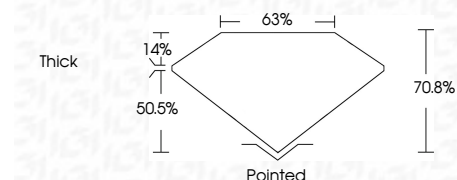
Red symbols indicate internal characteristics.
Green symbols indicate external characteristics.

COLOR

D E F G H I J Faint Very Light Light

CLARITY

FL	IF	VS ¹⁻²	VS ¹⁻²	SI ¹⁻²	I ¹⁻³
Flawless	Internally Flawless	Very Very Slightly Included	Very Slightly Included	Slightly Included	Included



ADDITIONAL GRADING INFORMATION

Polish **EXCELLENT**
Symmetry **EXCELLENT**
Fluorescence **NONE**
Inscription(s) **IGI LG775619971**
Comments: This Laboratory Grown Diamond was created by Chemical Vapor Deposition (CVD) growth process.



February 21, 2026
IGI Report No LG775619971
CUT CORNERED RECT. MIXED CUT
2.78 CARATS
FANCY INTENSE YELLOW
VS 1
9.26 X 6.68 X 4.73 MM
70.8%
63%
Thick
Pointed
EXCELLENT
EXCELLENT
NONE
IGI LG775619971
Comments: This Laboratory Grown Diamond was created by Chemical Vapor Deposition (CVD) growth process.