



ELECTRONIC COPY

LG775619932
Report verification at igi.org



February 21, 2026
IGI Report Number **LG775619932**
Description **LABORATORY GROWN DIAMOND**
Shape and Cutting Style **CUT CORNERED
RECTANGULAR MODIFIED
BRILLIANT**
Measurements **9.42 X 6.77 X 4.68 MM**
GRADING RESULTS
Carat Weight **2.86 CARATS**
Color Grade **FANCY INTENSE YELLOW**
Clarity Grade **VS 1**

February 21, 2026
IGI Report Number **LG775619932**
Description **LABORATORY GROWN DIAMOND**
Shape and Cutting Style **CUT CORNERED RECTANGULAR
MODIFIED BRILLIANT**
Measurements **9.42 X 6.77 X 4.68 MM**

GRADING RESULTS

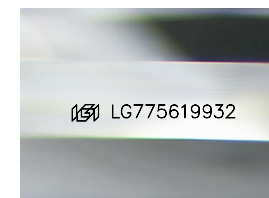
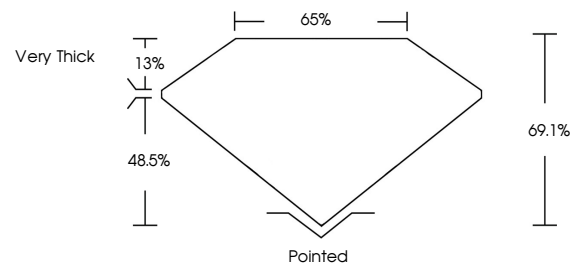
Carat Weight **2.86 CARATS**
Color Grade **FANCY INTENSE YELLOW**
Clarity Grade **VS 1**

ADDITIONAL GRADING INFORMATION

Polish **EXCELLENT**
Symmetry **EXCELLENT**
Fluorescence **NONE**
Inscription(s) **IGI LG775619932**

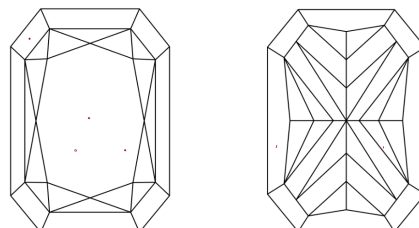
Comments: This Laboratory Grown Diamond was created by Chemical Vapor Deposition (CVD) growth process.

PROPORTIONS



Sample Image Used

CLARITY CHARACTERISTICS



KEY TO SYMBOLS

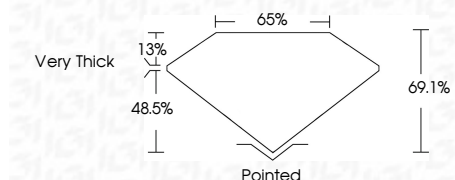
Red symbols indicate internal characteristics.
Green symbols indicate external characteristics.

COLOR

D E F G H I J Faint Very Light Light

CLARITY

FL	IF	VS ¹⁻²	VS ¹⁻²	SI ¹⁻²	I ¹⁻³
Flawless	Internally Flawless	Very Very Slightly Included	Very Slightly Included	Slightly Included	Included



ADDITIONAL GRADING INFORMATION

Polish **EXCELLENT**
Symmetry **EXCELLENT**
Fluorescence **NONE**
Inscription(s) **IGI LG775619932**
Comments: This Laboratory Grown Diamond was created by Chemical Vapor Deposition (CVD) growth process.



IGI



February 21, 2026
IGI Report No LG775619932
CUT CORNERED RECT. MODIFIED BRILLIANT
9.42 X 6.77 X 4.68 MM
2.86 CARATS
FANCY INTENSE YELLOW
VS 1
69.1%
65%
Very Thick
Pointed
EXCELLENT
EXCELLENT
NONE
IGI LG775619932

Comments: This Laboratory Grown Diamond was created by Chemical Vapor Deposition (CVD) growth process.