



ELECTRONIC COPY

LG775618858
Report verification at igi.org



February 17, 2026

IGI Report Number **LG775618858**

Description **LABORATORY GROWN DIAMOND**

Shape and Cutting Style **ROUND BRILLIANT**

Measurements **6.61 - 6.65 X 4.06 MM**

GRADING RESULTS

Carat Weight **1.09 CARAT**

Color Grade **D**

Clarity Grade **SI 1**

Cut Grade **IDEAL**

February 17, 2026

IGI Report Number **LG775618858**

Description **LABORATORY GROWN DIAMOND**

Shape and Cutting Style **ROUND BRILLIANT**

Measurements **6.61 - 6.65 X 4.06 MM**

GRADING RESULTS

Carat Weight **1.09 CARAT**

Color Grade **D**

Clarity Grade **SI 1**

Cut Grade **IDEAL**

ADDITIONAL GRADING INFORMATION

Polish **EXCELLENT**

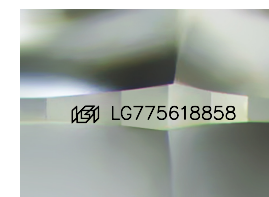
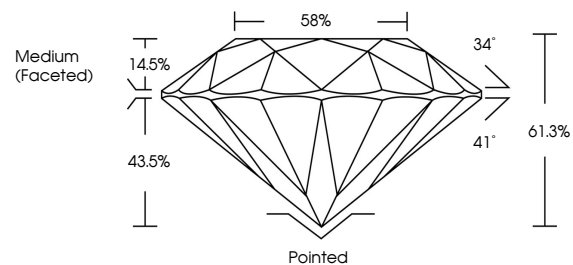
Symmetry **EXCELLENT**

Fluorescence **NONE**

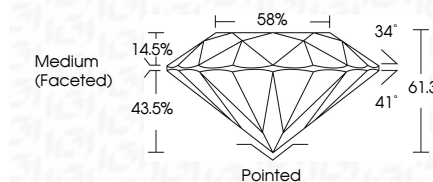
Inscription(s) **LG775618858**

Comments: This Laboratory Grown Diamond was created by Chemical Vapor Deposition (CVD) growth process. Type IIa

PROPORTIONS



Sample Image Used



COLOR

D E F G H I J Faint Very Light Light

CLARITY

| FL | IF | VS ¹⁻² | VS ¹⁻² | SI ¹⁻² | I ¹⁻³ |
|----------|---------------------|-----------------------------|------------------------|-------------------|------------------|
| Flawless | Internally Flawless | Very Very Slightly Included | Very Slightly Included | Slightly Included | Included |

ADDITIONAL GRADING INFORMATION

Polish **EXCELLENT**

Symmetry **EXCELLENT**

Fluorescence **NONE**

Inscription(s) **LG775618858**

Comments: This Laboratory Grown Diamond was created by Chemical Vapor Deposition (CVD) growth process. Type IIa



IGI



| | | | | | | | | | | | | | | | | |
|-------------------|---------------------------|-----------------|-----------------------|------------|---|------|-------|-------|-----|------------------|---------|-----------|-----------|------|-------------|---|
| February 17, 2026 | IGI Report No LG775618858 | ROUND BRILLIANT | 6.61 - 6.65 X 4.06 MM | 1.09 CARAT | D | SI 1 | IDEAL | 61.3% | 58% | Medium (Faceted) | Pointed | EXCELLENT | EXCELLENT | NONE | LG775618858 | Comments: This Laboratory Grown Diamond was created by Chemical Vapor Deposition (CVD) growth process. Type IIa |
|-------------------|---------------------------|-----------------|-----------------------|------------|---|------|-------|-------|-----|------------------|---------|-----------|-----------|------|-------------|---|