



ELECTRONIC COPY

LG775617523 Report verification at igi.org



February 14, 2026 IGI Report Number LG775617523 Description LABORATORY GROWN DIAMOND Shape and Cutting Style SQUARE CUSHION MODIFIED BRILLIANT Measurements 12.32 X 12.23 X 8.05 MM GRADING RESULTS Carat Weight 9.09 CARATS Color Grade G Clarity Grade VS 1

LABORATORY GROWN DIAMOND REPORT

February 14, 2026 IGI Report Number LG775617523 Description LABORATORY GROWN DIAMOND Shape and Cutting Style SQUARE CUSHION MODIFIED BRILLIANT Measurements 12.32 X 12.23 X 8.05 MM

GRADING RESULTS

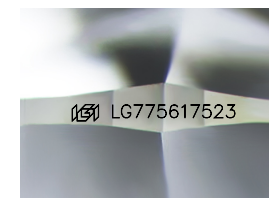
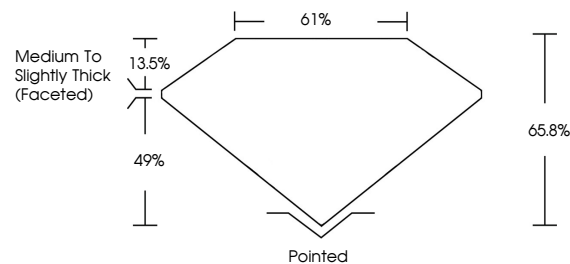
Carat Weight 9.09 CARATS Color Grade G Clarity Grade VS 1

ADDITIONAL GRADING INFORMATION

Polish EXCELLENT Symmetry EXCELLENT Fluorescence NONE Inscription(s) LG775617523

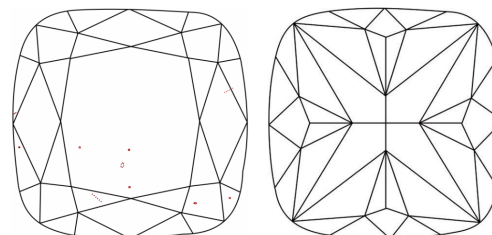
Comments: This Laboratory Grown Diamond was created by Chemical Vapor Deposition (CVD) growth process. Type IIa

PROPORTIONS



Sample Image Used

CLARITY CHARACTERISTICS



KEY TO SYMBOLS

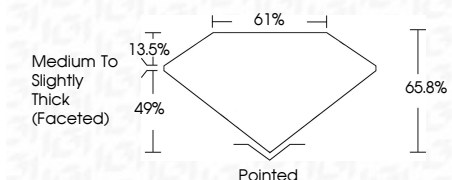
Red symbols indicate internal characteristics. Green symbols indicate external characteristics.

COLOR

D E F G H I J Faint Very Light Light

CLARITY

FL IF VS 1-2 VS 2-3 SI 1-2 SI 2-3 I 1-3 Flawless Internally Flawless Very Very Slightly Included Very Slightly Included Slightly Included Included



ADDITIONAL GRADING INFORMATION

Polish EXCELLENT Symmetry EXCELLENT Fluorescence NONE Inscription(s) LG775617523 Comments: This Laboratory Grown Diamond was created by Chemical Vapor Deposition (CVD) growth process. Type IIa



IGI



February 14, 2026 IGI Report No LG775617523 SQUARE CUSHION MODIFIED BRILLIANT 12.32 X 12.23 X 8.05 MM 9.09 CARATS G VS 1 65.8% 49% 61% Medium to Slightly Thick (Faceted) Pointed EXCELLENT EXCELLENT NONE NONE LG775617523 Comments: This Laboratory Grown Diamond was created by Chemical Vapor Deposition (CVD) growth process. Type IIa