



ELECTRONIC COPY

LG775615691 Report verification at igi.org



February 16, 2026 IGI Report Number LG775615691 Description LABORATORY GROWN DIAMOND Shape and Cutting Style ROUND BRILLIANT Measurements 8.63 - 8.68 X 5.29 MM GRADING RESULTS Carat Weight 2.42 CARATS Color Grade E Clarity Grade INTERNALLY FLAWLESS Cut Grade IDEAL

February 16, 2026 IGI Report Number LG775615691 Description LABORATORY GROWN DIAMOND Shape and Cutting Style ROUND BRILLIANT Measurements 8.63 - 8.68 X 5.29 MM

GRADING RESULTS

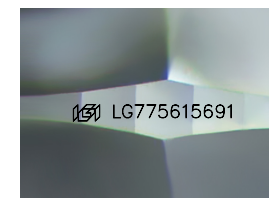
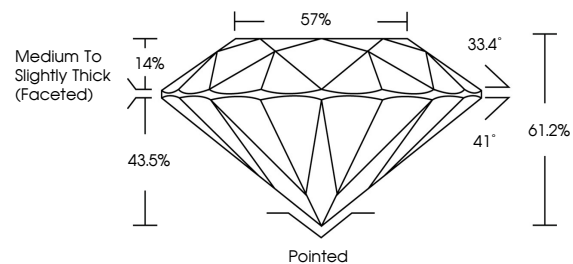
Carat Weight 2.42 CARATS Color Grade E Clarity Grade INTERNALLY FLAWLESS Cut Grade IDEAL

ADDITIONAL GRADING INFORMATION

Polish EXCELLENT Symmetry EXCELLENT Fluorescence NONE Inscription(s) IGI LG775615691

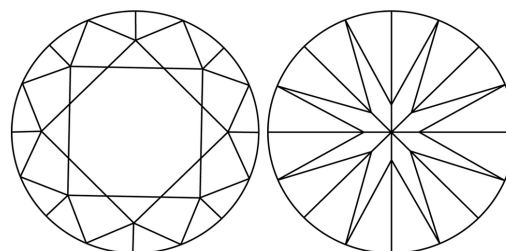
Comments: HEARTS & ARROWS As Grown - No indication of post-growth treatment. This Laboratory Grown Diamond was created by High Pressure High Temperature (HPHT) growth process. Type II

PROPORTIONS



Sample Image Used

CLARITY CHARACTERISTICS



KEY TO SYMBOLS

Red symbols indicate internal characteristics. Green symbols indicate external characteristics.

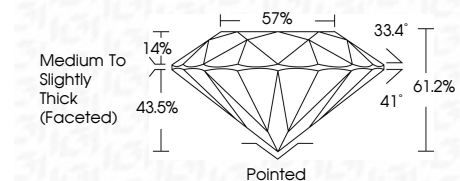


COLOR

D E F G H I J Faint Very Light Light

CLARITY

FL IF VS 1-2 VS 1-2 SI 1-2 I 1-3 Flawless Internally Flawless Very Very Slightly Included Very Slightly Included Slightly Included Included



ADDITIONAL GRADING INFORMATION

Polish EXCELLENT Symmetry EXCELLENT Fluorescence NONE Inscription(s) IGI LG775615691 Comments: HEARTS & ARROWS As Grown - No indication of post-growth treatment. This Laboratory Grown Diamond was created by High Pressure High Temperature (HPHT) growth process. Type II



Summary table: February 16, 2026 IGI Report No LG775615691 ROUND BRILLIANT 8.63 - 8.68 X 5.29 MM 2.42 CARATS E IF IDEAL 61.2% 57% Medium To Slightly Thick (Faceted) Pointed EXCELLENT EXCELLENT NONE IGI LG775615691