



**ELECTRONIC COPY**

LG775613716  
Report verification at igi.org



February 25, 2026

IGI Report Number **LG775613716**

Description **LABORATORY GROWN DIAMOND**

Shape and Cutting Style **CUSHION MIXED CUT**

Measurements **8.65 X 8.08 X 5.34 MM**

**GRADING RESULTS**

Carat Weight **3.57 CARATS**

Color Grade **FANCY INTENSE YELLOW**

Clarity Grade **VS 2**

February 25, 2026

IGI Report Number **LG775613716**

Description **LABORATORY GROWN DIAMOND**

Shape and Cutting Style **CUSHION MIXED CUT**

Measurements **8.65 X 8.08 X 5.34 MM**

**GRADING RESULTS**

Carat Weight **3.57 CARATS**

Color Grade **FANCY INTENSE YELLOW**

Clarity Grade **VS 2**

**ADDITIONAL GRADING INFORMATION**

Polish **EXCELLENT**

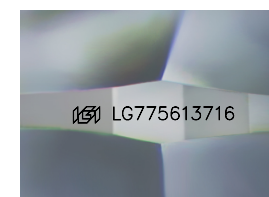
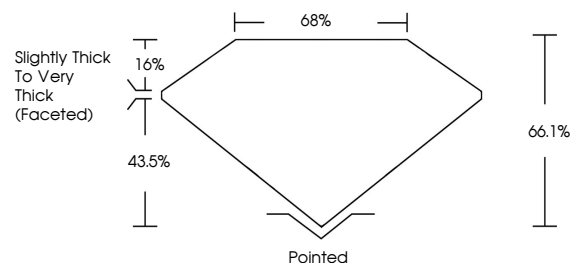
Symmetry **EXCELLENT**

Fluorescence **NONE**

Inscription(s) **IGI LG775613716**

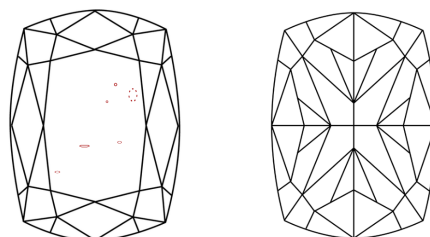
Comments: This Laboratory Grown Diamond was created by Chemical Vapor Deposition (CVD) growth process.

**PROPORTIONS**



Sample Image Used

**CLARITY CHARACTERISTICS**



**KEY TO SYMBOLS**

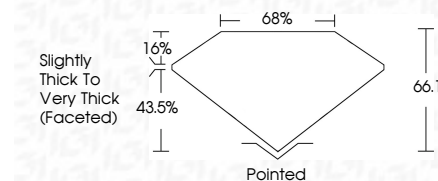
Red symbols indicate internal characteristics.  
Green symbols indicate external characteristics.

**COLOR**

D E F G H I J Faint Very Light Light

**CLARITY**

FL	IF	VS <sup>1-2</sup>	VS <sup>1-2</sup>	SI <sup>1-2</sup>	I <sup>1-3</sup>
Flawless	Internally Flawless	Very Very Slightly Included	Very Slightly Included	Slightly Included	Included



**ADDITIONAL GRADING INFORMATION**

Polish **EXCELLENT**

Symmetry **EXCELLENT**

Fluorescence **NONE**

Inscription(s) **IGI LG775613716**

Comments: This Laboratory Grown Diamond was created by Chemical Vapor Deposition (CVD) growth process.



February 25, 2026  
IGI Report No LG775613716  
**CUSHION MIXED CUT**  
8.65 X 8.08 X 5.34 MM  
3.57 CARATS  
FANCY INTENSE YELLOW  
VS 2  
66.1%  
43.5%  
1.6%  
Pointed  
EXCELLENT  
EXCELLENT  
NONE  
IGI LG775613716

Comments: This Laboratory Grown Diamond was created by Chemical Vapor Deposition (CVD) growth process.