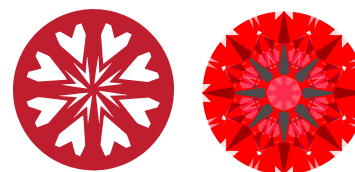




Light Performance Grade: Exceptional



Structured Light Environment Representation



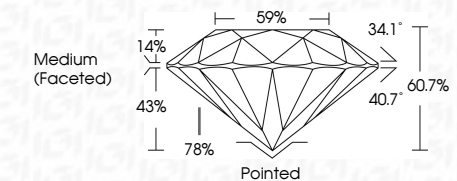
COLOR



CLARITY



February 14, 2026 IGI Report Number LG775612704 Description LABORATORY GROWN DIAMOND Shape and Cutting Style ROUND BRILLIANT Measurements 9.28 - 9.33 X 5.64 MM GRADING RESULTS Carat Weight 3.02 CARATS Color Grade D Clarity Grade VVS 2 Cut Grade IDEAL

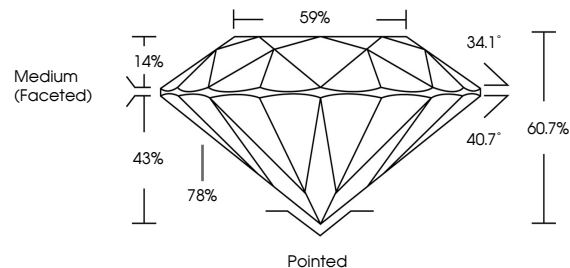


ADDITIONAL GRADING INFORMATION Polish EXCELLENT Symmetry EXCELLENT Fluorescence NONE Inscription(s) IGI LG775612704 Comments: HEARTS & ARROWS This Laboratory Grown Diamond was created by Chemical Vapor Deposition (CVD) growth process. Type IIa

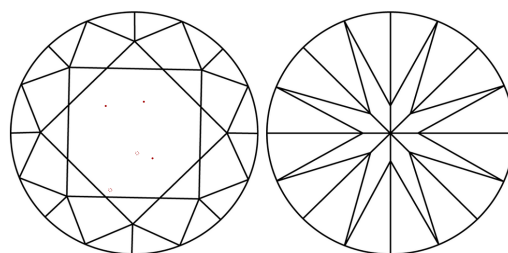


Summary table with columns: Date, Report No, Shape, Carat Weight, Color Grade, Clarity Grade, Depth, Table, Grade, Cut, Polish, Symmetry, Fluorescence, Inscription(s), Comments.

PROPORTIONS

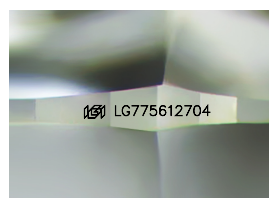


CLARITY CHARACTERISTICS



KEY TO SYMBOLS

Red symbols indicate internal characteristics. Green symbols indicate external characteristics.



Sample Image Used



ELECTRONIC COPY LABORATORY GROWN DIAMOND REPORT

February 14, 2026 IGI Report Number LG775612704 Description LABORATORY GROWN DIAMOND Shape and Cutting Style ROUND BRILLIANT Measurements 9.28 - 9.33 x 5.64 mm

GRADING RESULTS

Carat Weight 3.02 CARATS Color Grade D Clarity Grade VVS 2 Cut Grade IDEAL

ADDITIONAL GRADING INFORMATION

Polish EXCELLENT Symmetry EXCELLENT Fluorescence NONE Inscription(s) IGI LG775612704

Comments: HEARTS & ARROWS This Laboratory Grown Diamond was created by Chemical Vapor Deposition (CVD) growth process. Type IIa