



**ELECTRONIC COPY**

LG775610513  
Report verification at igi.org



February 18, 2026

IGI Report Number **LG775610513**

Description **LABORATORY GROWN DIAMOND**

Shape and Cutting Style **ROUND BRILLIANT**

Measurements **11.07 - 11.12 X 6.69 MM**

**GRADING RESULTS**

Carat Weight **5.06 CARATS**

Color Grade **F**

Clarity Grade **VVS 2**

Cut Grade **IDEAL**

February 18, 2026

IGI Report Number **LG775610513**

Description **LABORATORY GROWN DIAMOND**

Shape and Cutting Style **ROUND BRILLIANT**

Measurements **11.07 - 11.12 X 6.69 MM**

**GRADING RESULTS**

Carat Weight **5.06 CARATS**

Color Grade **F**

Clarity Grade **VVS 2**

Cut Grade **IDEAL**

**ADDITIONAL GRADING INFORMATION**

Polish **EXCELLENT**

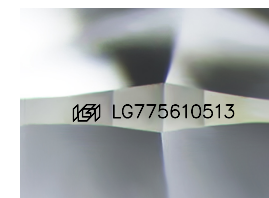
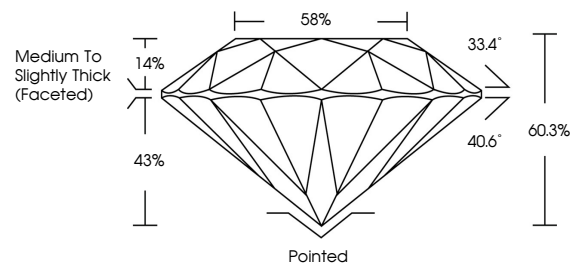
Symmetry **EXCELLENT**

Fluorescence **NONE**

Inscription(s) **IGI LG775610513**

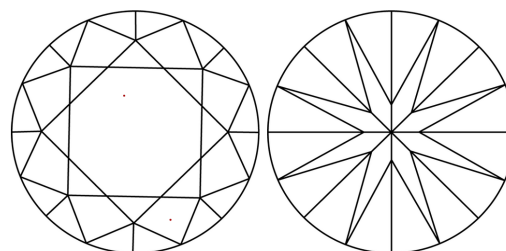
Comments: This Laboratory Grown Diamond was created by Chemical Vapor Deposition (CVD) growth process. Type IIa

**PROPORTIONS**



Sample Image Used

**CLARITY CHARACTERISTICS**



**KEY TO SYMBOLS**

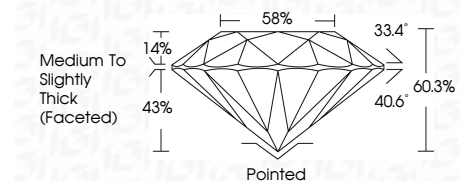
Red symbols indicate internal characteristics.  
Green symbols indicate external characteristics.

**COLOR**

D E F G H I J Faint Very Light Light

**CLARITY**

FL	IF	VVS <sup>1-2</sup>	VS <sup>1-2</sup>	SI <sup>1-2</sup>	I <sup>1-3</sup>
Flawless	Internally Flawless	Very Very Slightly Included	Very Slightly Included	Slightly Included	Included



**ADDITIONAL GRADING INFORMATION**

Polish **EXCELLENT**

Symmetry **EXCELLENT**

Fluorescence **NONE**

Inscription(s) **IGI LG775610513**

Comments: This Laboratory Grown Diamond was created by Chemical Vapor Deposition (CVD) growth process. Type IIa



**IGI**



February 18, 2026  
IGI Report No LG775610513  
ROUND BRILLIANT

5.06 CARATS  
F

11.07 - 11.12 X 6.69 MM  
58%  
Medium To Slightly Thick (Faceted)

Pointed  
EXCELLENT  
EXCELLENT  
NONE  
IGI LG775610513

Carat Weight  
Color Grade  
Clarity Grade  
Depth  
Table  
Girdle  
Culet  
Polish  
Symmetry  
Fluorescence  
Inscriptions(s)

Comments: This Laboratory Grown Diamond was created by Chemical Vapor Deposition (CVD) growth process. Type IIa