



**LABORATORY GROWN DIAMOND REPORT**

February 27, 2026  
 IGI Report Number **LG775606956**  
 Description **LABORATORY GROWN DIAMOND**  
 Shape and Cutting Style **OVAL MIXED CUT**  
 Measurements **7.18 X 5.28 X 2.19 MM**

**GRADING RESULTS**

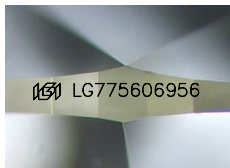
Carat Weight **0.68 CARAT**  
 Color Grade **FANCY LIGHT YELLOW**  
 Clarity Grade **SI 1**

**ADDITIONAL GRADING INFORMATION**

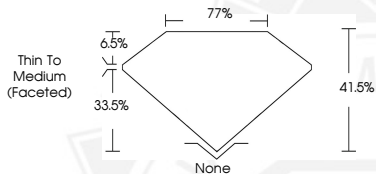
Polish **VERY GOOD**  
 Symmetry **VERY GOOD**  
 Fluorescence **NONE**  
 Inscription(s) **IGI LG775606956**

Comments: This Laboratory Grown Diamond was created by Chemical Vapor Deposition (CVD) growth process.

Secondary color: Brown



Sample Image Used



February 27, 2026

IGI Report Number **LG775606956**  
**OVAL MIXED CUT**  
**LABORATORY GROWN DIAMOND**  
**7.18 X 5.28 X 2.19 MM**

Carat Weight **0.68 CARAT**  
 Color Grade **FANCY LIGHT YELLOW**

Clarity Grade **SI 1**  
 Polish **VERY GOOD**  
 Symmetry **VERY GOOD**  
 Fluorescence **NONE**  
 Inscription(s) **IGI LG775606956**

Comments: This Laboratory Grown Diamond was created by Chemical Vapor Deposition (CVD) growth process. Secondary color: Brown



February 27, 2026

IGI Report Number **LG775606956**  
**OVAL MIXED CUT**  
**LABORATORY GROWN DIAMOND**  
**7.18 X 5.28 X 2.19 MM**

Carat Weight **0.68 CARAT**  
 Color Grade **FANCY LIGHT YELLOW**

Clarity Grade **SI 1**  
 Polish **VERY GOOD**  
 Symmetry **VERY GOOD**  
 Fluorescence **NONE**  
 Inscription(s) **IGI LG775606956**

Comments: This Laboratory Grown Diamond was created by Chemical Vapor Deposition (CVD) growth process. Secondary color: Brown



THIS DOCUMENT WAS PRODUCED WITH THE FOLLOWING SECURITY MEASURES: SPECIAL DOCUMENT PAPER, INK SCREENS, WATERMARK, BACKGROUND DESIGNS, HOLOGRAM AND OTHER SECURITY FEATURES NOT LISTED AND DO EXCEED DOCUMENT SECURITY INDUSTRY GUIDELINES.