



February 18, 2026

IGI Report Number **LG775606861**

**EMERALD CUT
LABORATORY GROWN DIAMOND
7.17 X 4.51 X 2.81 MM**

**0.91 CARAT
D
VS 1
EXCELLENT
EXCELLENT
NONE
None**
Inscription(s) **IGI LG775606861**

Comments: This Laboratory Grown Diamond was created by Chemical Vapor Deposition (CVD) growth process. Type IIa

LABORATORY GROWN DIAMOND REPORT

February 18, 2026

IGI Report Number

LG775606861

Description

LABORATORY GROWN DIAMOND

Shape and Cutting Style

EMERALD CUT

Measurements

7.17 X 4.51 X 2.81 MM

GRADING RESULTS

Carat Weight

0.91 CARAT

Color Grade

D

Clarity Grade

VS 1

ADDITIONAL GRADING INFORMATION

Polish

EXCELLENT

Symmetry

EXCELLENT

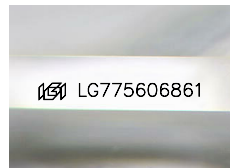
Fluorescence

NONE

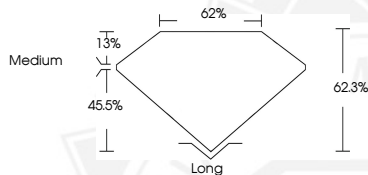
Inscription(s)

IGI LG775606861

Comments: This Laboratory Grown Diamond was created by Chemical Vapor Deposition (CVD) growth process. Type IIa



Sample Image Used



February 18, 2026

IGI Report Number **LG775606861**

**EMERALD CUT
LABORATORY GROWN DIAMOND
7.17 X 4.51 X 2.81 MM**

**0.91 CARAT
D
VS 1
EXCELLENT
EXCELLENT
NONE
None**
Inscription(s) **IGI LG775606861**

Comments: This Laboratory Grown Diamond was created by Chemical Vapor Deposition (CVD) growth process. Type IIa



THIS DOCUMENT WAS PRODUCED WITH THE FOLLOWING SECURITY MEASURES: SPECIAL DOCUMENT PAPER, INK SCREENS, WATERMARK, BACKGROUND DESIGNS, HOLOGRAM AND OTHER SECURITY FEATURES NOT LISTED AND DO EXCEED DOCUMENT SECURITY INDUSTRY GUIDELINES.