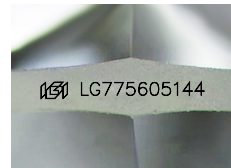




March 13, 2026
IGI Report Number LG775605144
SHIELD STEP CUT
LABORATORY GROWN DIAMOND
8.82 X 4.74 X 2.91 MM
 Carat Weight **0.98 CARAT**
 Color Grade **Y-Z**
 Clarity Grade **SI 1**
 Polish **VERY GOOD**
 Symmetry **VERY GOOD**
 Fluorescence **NONE**
 Inscription(s) **IGI LG775605144**

LABORATORY GROWN DIAMOND REPORT

March 13, 2026
 IGI Report Number **LG775605144**
 Description **LABORATORY GROWN DIAMOND**
 Shape and Cutting Style **SHIELD STEP CUT**
 Measurements **8.82 X 4.74 X 2.91 MM**



Sample Image Used

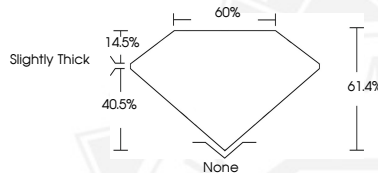
GRADING RESULTS

Carat Weight **0.98 CARAT**
 Color Grade **Y-Z**
 Clarity Grade **SI 1**

ADDITIONAL GRADING INFORMATION

Polish **VERY GOOD**
 Symmetry **VERY GOOD**
 Fluorescence **NONE**
 Inscription(s) **IGI LG775605144**

Comments: This Laboratory Grown Diamond was created by Chemical Vapor Deposition (CVD) growth process. Type IIa



March 13, 2026
IGI Report Number LG775605144
SHIELD STEP CUT
LABORATORY GROWN DIAMOND
8.82 X 4.74 X 2.91 MM
 Carat Weight **0.98 CARAT**
 Color Grade **Y-Z**
 Clarity Grade **SI 1**
 Polish **VERY GOOD**
 Symmetry **VERY GOOD**
 Fluorescence **NONE**
 Inscription(s) **IGI LG775605144**

Comments: This Laboratory Grown Diamond was created by Chemical Vapor Deposition (CVD) growth process. Type IIa



THIS DOCUMENT WAS PRODUCED WITH THE FOLLOWING SECURITY MEASURES: SPECIAL DOCUMENT PAPER, INK SCREENS, WATERMARK, BACKGROUND DESIGNS, HOLOGRAM AND OTHER SECURITY FEATURES NOT LISTED AND DO EXCEED DOCUMENT SECURITY INDUSTRY GUIDELINES.