



ELECTRONIC COPY

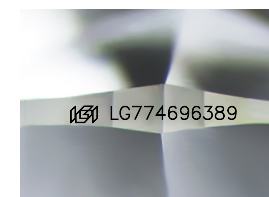
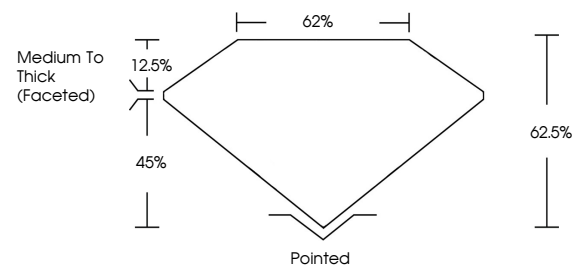
LG774696389
Report verification at igi.org



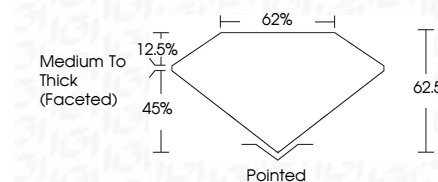
February 25, 2026
IGI Report Number **LG774696389**
Description **LABORATORY GROWN DIAMOND**
Shape and Cutting Style **CUSHION MODIFIED BRILLIANT**
Measurements **6.06 X 5.73 X 3.58 MM**
GRADING RESULTS
Carat Weight **1.06 CARAT**
Color Grade **FANCY LIGHT YELLOW**
Clarity Grade **VS 1**

February 25, 2026
IGI Report Number **LG774696389**
Description **LABORATORY GROWN DIAMOND**
Shape and Cutting Style **CUSHION MODIFIED BRILLIANT**
Measurements **6.06 X 5.73 X 3.58 MM**
GRADING RESULTS
Carat Weight **1.06 CARAT**
Color Grade **FANCY LIGHT YELLOW**
Clarity Grade **VS 1**

PROPORTIONS



Sample Image Used



ADDITIONAL GRADING INFORMATION

Polish **EXCELLENT**
Symmetry **EXCELLENT**
Fluorescence **NONE**
Inscription(s) **IGI LG774696389**

Comments: This Laboratory Grown Diamond was created by Chemical Vapor Deposition (CVD) growth process.

ADDITIONAL GRADING INFORMATION

Polish **EXCELLENT**
Symmetry **EXCELLENT**
Fluorescence **NONE**
Inscription(s) **IGI LG774696389**
Comments: This Laboratory Grown Diamond was created by Chemical Vapor Deposition (CVD) growth process.

COLOR

D E F G H I J Faint Very Light Light

CLARITY

| FL | IF | VS ¹⁻² | VS ¹⁻² | SI ¹⁻² | I ¹⁻³ |
|----------|---------------------|-----------------------------|------------------------|-------------------|------------------|
| Flawless | Internally Flawless | Very Very Slightly Included | Very Slightly Included | Slightly Included | Included |



IGI



February 25, 2026
IGI Report No **LG774696389**
CUSHION MODIFIED BRILLIANT
6.06 X 5.73 X 3.58 MM
Carat Weight **1.06 CARAT**
Color Grade **FANCY LIGHT YELLOW**
Clarity Grade **VS 1**
Depth **62.5%**
Table **62%**
Girdle **Medium To Thick (Faceted)**
Culet **Pointed**
Polish **EXCELLENT**
Symmetry **EXCELLENT**
Fluorescence **NONE**
Inscription(s) **IGI LG774696389**
Comments: This Laboratory Grown Diamond was created by Chemical Vapor Deposition (CVD) growth process.