



**LABORATORY GROWN DIAMOND REPORT**

February 24, 2026  
 IGI Report Number **LG774696346**  
 Description **LABORATORY GROWN DIAMOND**  
 Shape and Cutting Style **OVAL BRILLIANT**  
 Measurements **6.26 X 4.59 X 2.88 MM**

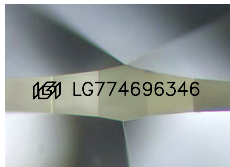
**GRADING RESULTS**

Carat Weight **0.52 CARAT**  
 Color Grade **E**  
 Clarity Grade **VS 1**

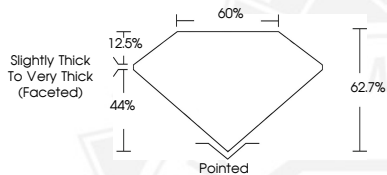
**ADDITIONAL GRADING INFORMATION**

Polish **GOOD**  
 Symmetry **GOOD**  
 Fluorescence **NONE**  
 Inscription(s) **IGI LG774696346**

Comments: This Laboratory Grown Diamond was created by Chemical Vapor Deposition (CVD) growth process. Type IIa



Sample Image Used



February 24, 2026  
 IGI Report Number **LG774696346**  
**OVAL BRILLIANT**  
**LABORATORY GROWN DIAMOND**  
**6.26 X 4.59 X 2.88 MM**  
 Carat Weight **0.52 CARAT**  
 Color Grade **E**  
 Clarity Grade **VS 1**  
 Polish **GOOD**  
 Symmetry **GOOD**  
 Fluorescence **NONE**  
 Inscription(s) **IGI LG774696346**

Comments: This Laboratory Grown Diamond was created by Chemical Vapor Deposition (CVD) growth process. Type IIa



February 24, 2026  
 IGI Report Number **LG774696346**  
**OVAL BRILLIANT**  
**LABORATORY GROWN DIAMOND**  
**6.26 X 4.59 X 2.88 MM**  
 Carat Weight **0.52 CARAT**  
 Color Grade **E**  
 Clarity Grade **VS 1**  
 Polish **GOOD**  
 Symmetry **GOOD**  
 Fluorescence **NONE**  
 Inscription(s) **IGI LG774696346**

Comments: This Laboratory Grown Diamond was created by Chemical Vapor Deposition (CVD) growth process. Type IIa

THIS DOCUMENT WAS PRODUCED WITH THE FOLLOWING SECURITY MEASURES: SPECIAL DOCUMENT PAPER, INK SCREENS, WATERMARK, BACKGROUND DESIGNS, HOLOGRAM AND OTHER SECURITY FEATURES NOT LISTED AND DO EXCEED DOCUMENT SECURITY INDUSTRY GUIDELINES.