



**ELECTRONIC COPY**

LG774696254  
Report verification at igi.org



February 17, 2026

IGI Report Number **LG774696254**

Description **LABORATORY GROWN DIAMOND**

Shape and Cutting Style **OVAL BRILLIANT**

Measurements **9.26 X 6.46 X 3.96 MM**

**GRADING RESULTS**

Carat Weight **1.48 CARAT**

Color Grade **D**

Clarity Grade **VS 1**

February 17, 2026  
IGI Report Number **LG774696254**  
Description **LABORATORY GROWN DIAMOND**  
Shape and Cutting Style **OVAL BRILLIANT**  
Measurements **9.26 X 6.46 X 3.96 MM**

**GRADING RESULTS**

Carat Weight **1.48 CARAT**

Color Grade **D**

Clarity Grade **VS 1**

**ADDITIONAL GRADING INFORMATION**

Polish **EXCELLENT**

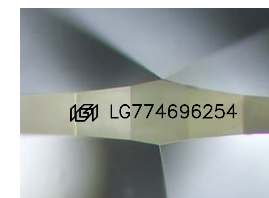
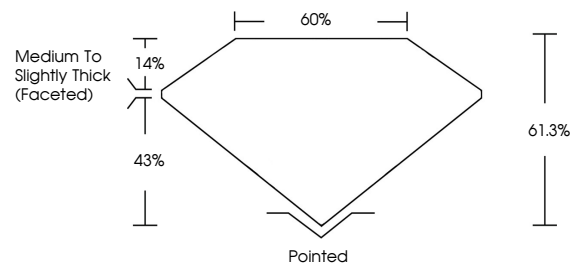
Symmetry **EXCELLENT**

Fluorescence **NONE**

Inscription(s) **IGI LG774696254**

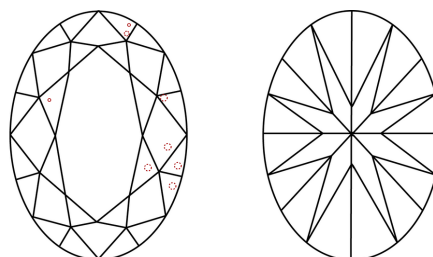
Comments: This Laboratory Grown Diamond was created by Chemical Vapor Deposition (CVD) growth process. Type IIa

**PROPORTIONS**



Sample Image Used

**CLARITY CHARACTERISTICS**



**KEY TO SYMBOLS**

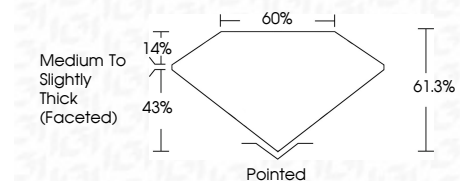
Red symbols indicate internal characteristics.  
Green symbols indicate external characteristics.

**COLOR**

D E F G H I J Faint Very Light Light

**CLARITY**

FL	IF	VS <sup>1-2</sup>	VS <sup>1-2</sup>	SI <sup>1-2</sup>	I <sup>1-3</sup>
Flawless	Internally Flawless	Very Very Slightly Included	Very Slightly Included	Slightly Included	Included



**ADDITIONAL GRADING INFORMATION**

Polish **EXCELLENT**

Symmetry **EXCELLENT**

Fluorescence **NONE**

Inscription(s) **IGI LG774696254**

Comments: This Laboratory Grown Diamond was created by Chemical Vapor Deposition (CVD) growth process. Type IIa



**IGI**



February 17, 2026  
IGI Report No LG774696254  
**OVAL BRILLIANT**  
9.26 X 6.46 X 3.96 MM  
1.48 CARAT  
Color Grade **D**  
Clarity Grade **VS 1**  
Depth 61.0%  
Table 60%  
Medium to Slightly Thick (Faceted)  
Pointed  
Culet **EXCELLENT**  
Polish **EXCELLENT**  
Symmetry **EXCELLENT**  
Fluorescence **NONE**  
Inscription(s) **IGI LG774696254**

Comments: This Laboratory Grown Diamond was created by Chemical Vapor Deposition (CVD) growth process. Type IIa