



ELECTRONIC COPY

LG774695975
Report verification at igi.org



February 13, 2026

IGI Report Number **LG774695975**

Description **LABORATORY GROWN DIAMOND**

Shape and Cutting Style **EMERALD CUT**

Measurements **17.99 X 12.02 X 7.55 MM**

GRADING RESULTS

Carat Weight **16.85 CARATS**

Color Grade **F**

Clarity Grade **VVS 2**

February 13, 2026
IGI Report Number **LG774695975**
Description **LABORATORY GROWN DIAMOND**
Shape and Cutting Style **EMERALD CUT**
Measurements **17.99 X 12.02 X 7.55 MM**

GRADING RESULTS

Carat Weight **16.85 CARATS**

Color Grade **F**

Clarity Grade **VVS 2**

ADDITIONAL GRADING INFORMATION

Polish **EXCELLENT**

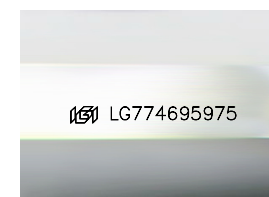
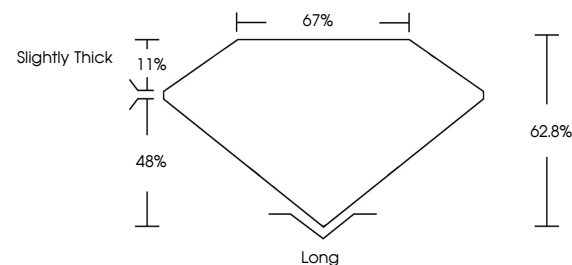
Symmetry **EXCELLENT**

Fluorescence **NONE**

Inscription(s) **IGI LG774695975**

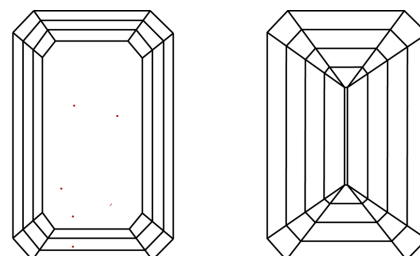
Comments: This Laboratory Grown Diamond was created by Chemical Vapor Deposition (CVD) growth process. Type IIa

PROPORTIONS



Sample Image Used

CLARITY CHARACTERISTICS



KEY TO SYMBOLS

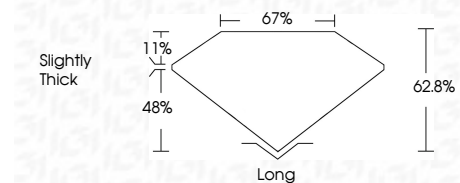
Red symbols indicate internal characteristics.
Green symbols indicate external characteristics.

COLOR

D E F G H I J Faint Very Light Light

CLARITY

FL	IF	VVS ¹⁻²	VS ¹⁻²	SI ¹⁻²	I ¹⁻³
Flawless	Internally Flawless	Very Very Slightly Included	Very Slightly Included	Slightly Included	Included



ADDITIONAL GRADING INFORMATION

Polish **EXCELLENT**

Symmetry **EXCELLENT**

Fluorescence **NONE**

Inscription(s) **IGI LG774695975**

Comments: This Laboratory Grown Diamond was created by Chemical Vapor Deposition (CVD) growth process. Type IIa



February 13, 2026
IGI Report No **LG774695975**
EMERALD CUT
17.99 X 12.02 X 7.55 MM
16.85 CARATS
F
VVS 2
62.8%
67%
Slightly Thick
Long
EXCELLENT
EXCELLENT
NONE
IGI LG774695975
Comments: This Laboratory Grown Diamond was created by Chemical Vapor Deposition (CVD) growth process. Type IIa