



ELECTRONIC COPY

LG774695585
Report verification at igi.org



February 13, 2026

IGI Report Number **LG774695585**

Description **LABORATORY GROWN DIAMOND**

Shape and Cutting Style **CUT CORNERED
RECTANGULAR MODIFIED
BRILLIANT**

Measurements **9.83 X 6.80 X 4.63 MM**

GRADING RESULTS

Carat Weight **2.68 CARATS**

Color Grade **F**

Clarity Grade **VS 1**

February 13, 2026

IGI Report Number **LG774695585**

Description **LABORATORY GROWN DIAMOND**

Shape and Cutting Style **CUT CORNERED RECTANGULAR
MODIFIED BRILLIANT**

Measurements **9.83 X 6.80 X 4.63 MM**

GRADING RESULTS

Carat Weight **2.68 CARATS**

Color Grade **F**

Clarity Grade **VS 1**

ADDITIONAL GRADING INFORMATION

Polish **EXCELLENT**

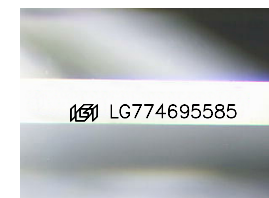
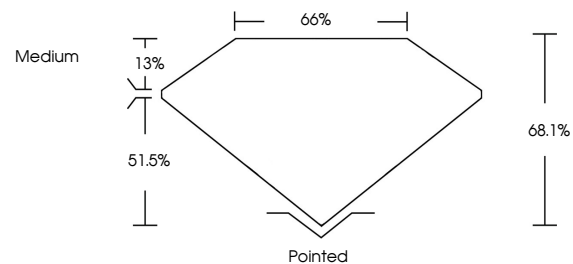
Symmetry **EXCELLENT**

Fluorescence **NONE**

Inscription(s) **IGI LG774695585**

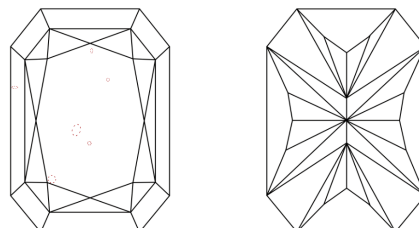
Comments: This Laboratory Grown Diamond was created by Chemical Vapor Deposition (CVD) growth process.
Type IIa

PROPORTIONS



Sample Image Used

CLARITY CHARACTERISTICS



KEY TO SYMBOLS

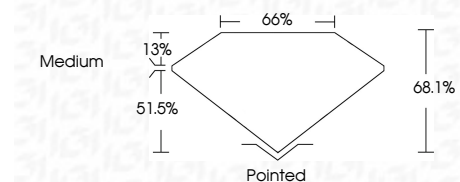
Red symbols indicate internal characteristics.
Green symbols indicate external characteristics.

COLOR

D E F G H I J Faint Very Light Light

CLARITY

FL	IF	VS ¹⁻²	VS ¹⁻²	SI ¹⁻²	I ¹⁻³
Flawless	Internally Flawless	Very Very Slightly Included	Very Slightly Included	Slightly Included	Included



ADDITIONAL GRADING INFORMATION

Polish **EXCELLENT**

Symmetry **EXCELLENT**

Fluorescence **NONE**

Inscription(s) **IGI LG774695585**

Comments: This Laboratory Grown Diamond was created by Chemical Vapor Deposition (CVD) growth process.
Type IIa



IGI



February 13, 2026
IGI Report No LG774695585
CUT CORNERED RECT. MODIFIED BRILLIANT
9.83 X 6.80 X 4.63 MM
2.68 CARATS
F
VS 1
68.1%
51.5%
Medium
Pointed
EXCELLENT
EXCELLENT
NONE
IGI LG774695585
Comments: This Laboratory Grown Diamond was created by Chemical Vapor Deposition (CVD) growth process.
Type IIa