



**ELECTRONIC COPY**

LG774694884  
Report verification at igi.org



February 13, 2026

IGI Report Number **LG774694884**

Description **LABORATORY GROWN DIAMOND**

Shape and Cutting Style **OVAL BRILLIANT**

Measurements **9.24 X 6.52 X 4.08 MM**

**GRADING RESULTS**

Carat Weight **1.53 CARAT**

Color Grade **E**

Clarity Grade **VVS 2**

February 13, 2026  
IGI Report Number **LG774694884**  
Description **LABORATORY GROWN DIAMOND**  
Shape and Cutting Style **OVAL BRILLIANT**  
Measurements **9.24 X 6.52 X 4.08 MM**

**GRADING RESULTS**

Carat Weight **1.53 CARAT**

Color Grade **E**

Clarity Grade **VVS 2**

**ADDITIONAL GRADING INFORMATION**

Polish **EXCELLENT**

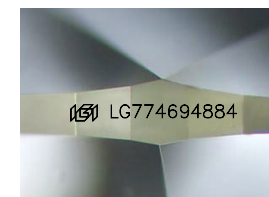
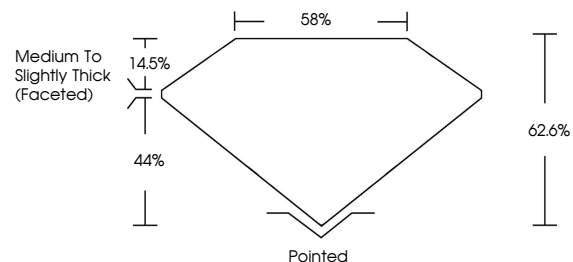
Symmetry **EXCELLENT**

Fluorescence **NONE**

Inscription(s) **IGI LG774694884**

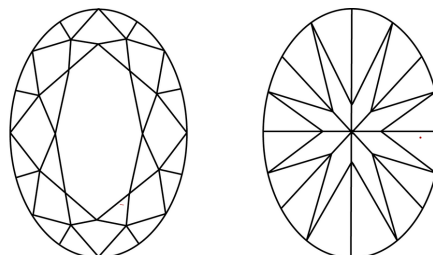
Comments: This Laboratory Grown Diamond was created by Chemical Vapor Deposition (CVD) growth process. Type IIa

**PROPORTIONS**



Sample Image Used

**CLARITY CHARACTERISTICS**



**KEY TO SYMBOLS**

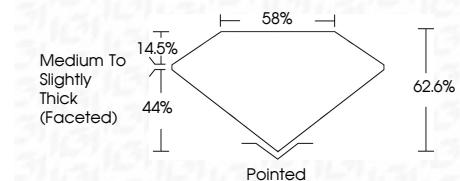
Red symbols indicate internal characteristics.  
Green symbols indicate external characteristics.

**COLOR**

D E F G H I J Faint Very Light Light

**CLARITY**

FL	IF	VVS <sup>1-2</sup>	VS <sup>1-2</sup>	SI <sup>1-2</sup>	I <sup>1-3</sup>
Flawless	Internally Flawless	Very Very Slightly Included	Very Slightly Included	Slightly Included	Included



**ADDITIONAL GRADING INFORMATION**

Polish **EXCELLENT**

Symmetry **EXCELLENT**

Fluorescence **NONE**

Inscription(s) **IGI LG774694884**

Comments: This Laboratory Grown Diamond was created by Chemical Vapor Deposition (CVD) growth process. Type IIa



**IGI**

February 13, 2026  
IGI Report No LG774694884  
**OVAL BRILLIANT**  
9.24 X 6.52 X 4.08 MM  
1.53 CARAT  
E  
VVS 2  
62.6%  
58%  
Medium to Slightly Thick (Faceted)  
Pointed  
EXCELLENT  
EXCELLENT  
NONE  
IGI LG774694884  
Comments: This Laboratory Grown Diamond was created by Chemical Vapor Deposition (CVD) growth process. Type IIa