



ELECTRONIC COPY

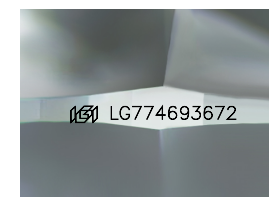
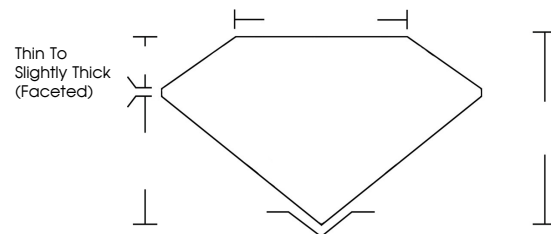
LG774693672
Report verification at igi.org



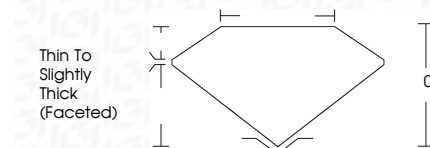
March 6, 2026
IGI Report Number **LG774693672**
Description **LABORATORY GROWN DIAMOND**
Shape and Cutting Style **CUSHION ROSE CUT**
Measurements **17.54 X 12.51 X 1.86 MM**
GRADING RESULTS
Carat Weight **5.40 CARATS**
Color Grade **FANCY INTENSE BLUE**
Clarity Grade **VS 2**

March 6, 2026
IGI Report Number **LG774693672**
Description **LABORATORY GROWN DIAMOND**
Shape and Cutting Style **CUSHION ROSE CUT**
Measurements **17.54 X 12.51 X 1.86 MM**
GRADING RESULTS
Carat Weight **5.40 CARATS**
Color Grade **FANCY INTENSE BLUE**
Clarity Grade **VS 2**

PROPORTIONS



Sample Image Used



ADDITIONAL GRADING INFORMATION

Polish **EXCELLENT**
Symmetry **EXCELLENT**
Fluorescence **NONE**
Inscription(s) **IGI LG774693672**

Comments: This Laboratory Grown Diamond was created by Chemical Vapor Deposition (CVD) growth process.
Indications of post-growth treatment.

ADDITIONAL GRADING INFORMATION

Polish **EXCELLENT**
Symmetry **EXCELLENT**
Fluorescence **NONE**
Inscription(s) **IGI LG774693672**
Comments: This Laboratory Grown Diamond was created by Chemical Vapor Deposition (CVD) growth process.
Indications of post-growth treatment.

COLOR

D E F G H I J Faint Very Light Light

CLARITY

FL	IF	VS ¹⁻²	VS ¹⁻²	SI ¹⁻²	I ¹⁻³
Flawless	Internally Flawless	Very Very Slightly Included	Very Slightly Included	Slightly Included	Included



IGI



March 6, 2026
IGI Report No LG774693672
CUSHION ROSE CUT
17.54 X 12.51 X 1.86 MM
5.40 CARATS
FANCY INTENSE BLUE
VS 2
Thin To Slightly Thick (Faceted)
EXCELLENT
EXCELLENT
NONE
IGI LG774693672
Comments: This Laboratory Grown Diamond was created by Chemical Vapor Deposition (CVD) growth process.
Indications of post-growth treatment.