



**ELECTRONIC COPY**

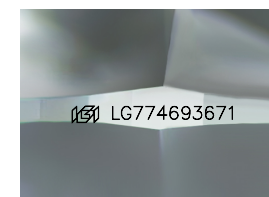
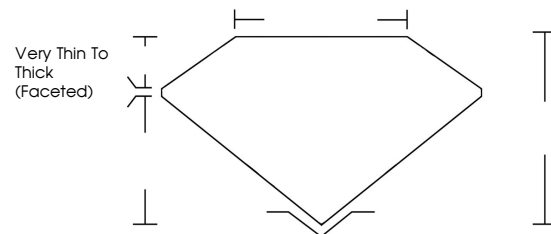
LG774693671  
Report verification at igi.org



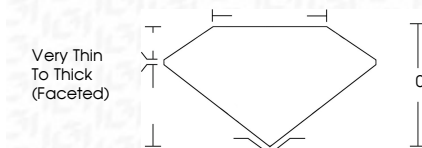
March 6, 2026  
IGI Report Number **LG774693671**  
Description **LABORATORY GROWN DIAMOND**  
Shape and Cutting Style **PEAR ROSE CUT**  
Measurements **11.61 X 12.13 X 2.77 MM**  
**GRADING RESULTS**  
Carat Weight **3.43 CARATS**  
Color Grade **FANCY INTENSE BLUE**  
Clarity Grade **VS 1**

March 6, 2026  
IGI Report Number **LG774693671**  
Description **LABORATORY GROWN DIAMOND**  
Shape and Cutting Style **PEAR ROSE CUT**  
Measurements **11.61 X 12.13 X 2.77 MM**  
**GRADING RESULTS**  
Carat Weight **3.43 CARATS**  
Color Grade **FANCY INTENSE BLUE**  
Clarity Grade **VS 1**

**PROPORTIONS**



Sample Image Used



**ADDITIONAL GRADING INFORMATION**

Polish **EXCELLENT**  
Symmetry **EXCELLENT**  
Fluorescence **NONE**  
Inscription(s) **IGI LG774693671**

Comments: This Laboratory Grown Diamond was created by Chemical Vapor Deposition (CVD) growth process.  
Indications of post-growth treatment.

Secondary color: Green

**COLOR**

D E F G H I J Faint Very Light Light

**CLARITY**

FL	IF	VS <sup>1-2</sup>	VS <sup>1-2</sup>	SI <sup>1-2</sup>	I <sup>1-3</sup>
Flawless	Internally Flawless	Very Very Slightly Included	Very Slightly Included	Slightly Included	Included

**ADDITIONAL GRADING INFORMATION**

Polish **EXCELLENT**  
Symmetry **EXCELLENT**  
Fluorescence **NONE**  
Inscription(s) **IGI LG774693671**  
Comments: This Laboratory Grown Diamond was created by Chemical Vapor Deposition (CVD) growth process.  
Indications of post-growth treatment.  
Secondary color: Green



**IGI**



March 6, 2026  
IGI Report No **LG774693671**  
**PEAR ROSE CUT**  
**11.61 X 12.13 X 2.77 MM**  
**3.43 CARATS**  
**FANCY INTENSE BLUE**  
Color Grade  
Clarity Grade **VS 1**  
Depth **0%**  
Table **0%**  
Girdle **Very Thin To Thick (Faceted)**  
Culet  
Polish **EXCELLENT**  
Symmetry **EXCELLENT**  
Fluorescence **NONE**  
Inscription(s) **IGI LG774693671**  
Comments: This Laboratory Grown Diamond was created by Chemical Vapor Deposition (CVD) growth process.  
Indications of post-growth treatment.  
Secondary color: Green