



ELECTRONIC COPY

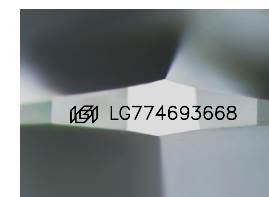
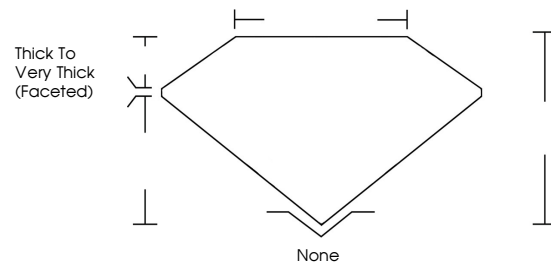
LG774693668
Report verification at igi.org



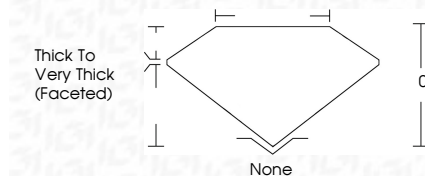
April 2, 2026
IGI Report Number **LG774693668**
Description **LABORATORY GROWN DIAMOND**
Shape and Cutting Style **FACETED DISK**
Measurements **5.90 X 5.84 X 5.19 MM**
GRADING RESULTS
Carat Weight **1.13 CARAT**
Color Grade **FANCY INTENSE BLUE**
Clarity Grade **VS 1**

April 2, 2026
IGI Report Number **LG774693668**
Description **LABORATORY GROWN DIAMOND**
Shape and Cutting Style **FACETED DISK**
Measurements **5.90 X 5.84 X 5.19 MM**
GRADING RESULTS
Carat Weight **1.13 CARAT**
Color Grade **FANCY INTENSE BLUE**
Clarity Grade **VS 1**

PROPORTIONS



Sample Image Used



ADDITIONAL GRADING INFORMATION
Polish **VERY GOOD**
Symmetry **VERY GOOD**
Fluorescence **NONE**
Inscription(s) **IGI LG774693668**

Comments: This Laboratory Grown Diamond was created by Chemical Vapor Deposition (CVD) growth process.
Indications of post-growth treatment.

COLOR

D E F G H I J Faint Very Light Light

CLARITY

FL	IF	VS ¹⁻²	VS ¹⁻²	SI ¹⁻²	I ¹⁻³
Flawless	Internally Flawless	Very Very Slightly Included	Very Slightly Included	Slightly Included	Included

ADDITIONAL GRADING INFORMATION

Polish **VERY GOOD**
Symmetry **VERY GOOD**
Fluorescence **NONE**
Inscription(s) **IGI LG774693668**
Comments: This Laboratory Grown Diamond was created by Chemical Vapor Deposition (CVD) growth process.
Indications of post-growth treatment.



IGI



April 2, 2026
IGI Report No **LG774693668**
FACETED DISK
5.90 X 5.84 X 5.19 MM
1.13 CARAT
FANCY INTENSE BLUE
VS 1
Thick to Very Thick (Faceted)
None
VERY GOOD
VERY GOOD
NONE
IGI LG774693668
Comments: This Laboratory Grown Diamond was created by Chemical Vapor Deposition (CVD) growth process.
Indications of post-growth treatment.