



ELECTRONIC COPY

LG774690055
Report verification at igi.org



February 19, 2026
IGI Report Number **LG774690055**

Description **LABORATORY GROWN DIAMOND**

Shape and Cutting Style **CUT CORNERED
RECTANGULAR MODIFIED
BRILLIANT**

Measurements **6.76 X 4.83 X 3.36 MM**

GRADING RESULTS

Carat Weight **1.09 CARAT**

Color Grade **FANCY YELLOW**

Clarity Grade **VVS 2**

LABORATORY GROWN DIAMOND REPORT

February 19, 2026

IGI Report Number **LG774690055**

Description **LABORATORY GROWN DIAMOND**

Shape and Cutting Style **CUT CORNERED RECTANGULAR
MODIFIED BRILLIANT**

Measurements **6.76 X 4.83 X 3.36 MM**

GRADING RESULTS

Carat Weight **1.09 CARAT**

Color Grade **FANCY YELLOW**

Clarity Grade **VVS 2**

ADDITIONAL GRADING INFORMATION

Polish **EXCELLENT**

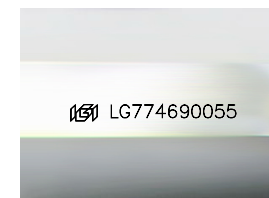
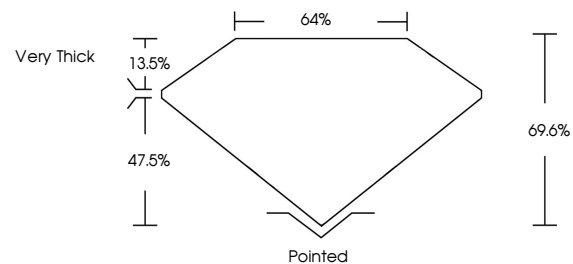
Symmetry **EXCELLENT**

Fluorescence **NONE**

Inscription(s) **IGI LG774690055**

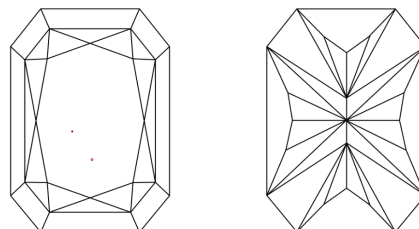
Comments: This Laboratory Grown Diamond was created by Chemical Vapor Deposition (CVD) growth process.

PROPORTIONS



Sample Image Used

CLARITY CHARACTERISTICS



KEY TO SYMBOLS

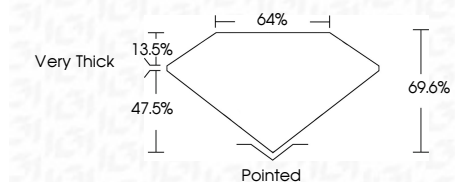
Red symbols indicate internal characteristics.
Green symbols indicate external characteristics.

COLOR

D E F G H I J Faint Very Light Light

CLARITY

FL	IF	VVS ¹⁻²	VS ¹⁻²	SI ¹⁻²	I ¹⁻³
Flawless	Internally Flawless	Very Very Slightly Included	Very Slightly Included	Slightly Included	Included



ADDITIONAL GRADING INFORMATION

Polish **EXCELLENT**

Symmetry **EXCELLENT**

Fluorescence **NONE**

Inscription(s) **IGI LG774690055**

Comments: This Laboratory Grown Diamond was created by Chemical Vapor Deposition (CVD) growth process.



IGI



February 19, 2026
IGI Report No LG774690055
CUT CORNERED RECT. MODIFIED BRILLIANT
6.76 X 4.83 X 3.36 MM
1.09 CARAT
FANCY YELLOW
VVS 2
69.6%
47.5%
Very Thick
Pointed
EXCELLENT
EXCELLENT
NONE
IGI LG774690055
Comments: This Laboratory Grown Diamond was created by Chemical Vapor Deposition (CVD) growth process.