



February 13, 2026

IGI Report Number **LG774684286**

**PRINCESS CUT  
LABORATORY GROWN DIAMOND  
4.27 X 4.26 X 3.27 MM**

Carat Weight **0.49 CARAT**  
Color Grade **D**  
Clarity Grade **VVS 2**  
Polish **VERY GOOD**  
Symmetry **VERY GOOD**  
Fluorescence **NONE**  
Inscription(s) **IGI LG774684286**

Comments: This Laboratory Grown Diamond was created by Chemical Vapor Deposition (CVD) growth process. Type IIa

**LABORATORY GROWN DIAMOND REPORT**

February 13, 2026

IGI Report Number **LG774684286**

Description **LABORATORY GROWN DIAMOND**

Shape and Cutting Style **PRINCESS CUT**

Measurements **4.27 X 4.26 X 3.27 MM**

**GRADING RESULTS**

Carat Weight **0.49 CARAT**

Color Grade **D**

Clarity Grade **VVS 2**

**ADDITIONAL GRADING INFORMATION**

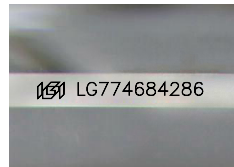
Polish **VERY GOOD**

Symmetry **VERY GOOD**

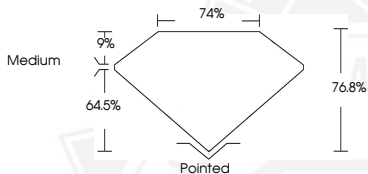
Fluorescence **NONE**

Inscription(s) **IGI LG774684286**

Comments: This Laboratory Grown Diamond was created by Chemical Vapor Deposition (CVD) growth process. Type IIa



Sample Image Used



February 13, 2026

IGI Report Number **LG774684286**

**PRINCESS CUT  
LABORATORY GROWN DIAMOND  
4.27 X 4.26 X 3.27 MM**

Carat Weight **0.49 CARAT**  
Color Grade **D**  
Clarity Grade **VVS 2**  
Polish **VERY GOOD**  
Symmetry **VERY GOOD**  
Fluorescence **NONE**  
Inscription(s) **IGI LG774684286**

Comments: This Laboratory Grown Diamond was created by Chemical Vapor Deposition (CVD) growth process. Type IIa



THIS DOCUMENT WAS PRODUCED WITH THE FOLLOWING SECURITY MEASURES: SPECIAL DOCUMENT PAPER, INK SCREENS, WATERMARK, BACKGROUND DESIGNS, HOLOGRAM AND OTHER SECURITY FEATURES NOT LISTED AND DO EXCEED DOCUMENT SECURITY INDUSTRY GUIDELINES.