



ELECTRONIC COPY

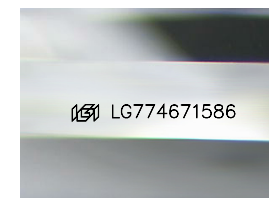
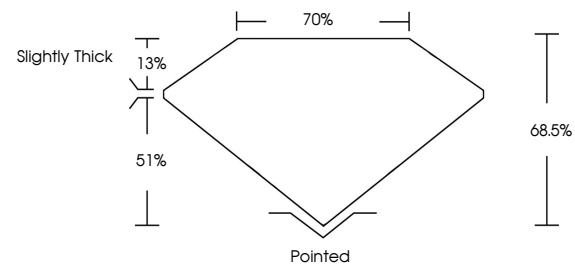
LG774671586
Report verification at igi.org



February 18, 2026
IGI Report Number **LG774671586**
Description **LABORATORY GROWN DIAMOND**
Shape and Cutting Style **SQUARE EMERALD CUT**
Measurements **8.10 X 8.10 X 5.55 MM**
GRADING RESULTS
Carat Weight **3.50 CARATS**
Color Grade **FANCY LIGHT YELLOW**
Clarity Grade **VS 2**

February 18, 2026
IGI Report Number **LG774671586**
Description **LABORATORY GROWN DIAMOND**
Shape and Cutting Style **SQUARE EMERALD CUT**
Measurements **8.10 X 8.10 X 5.55 MM**

PROPORTIONS

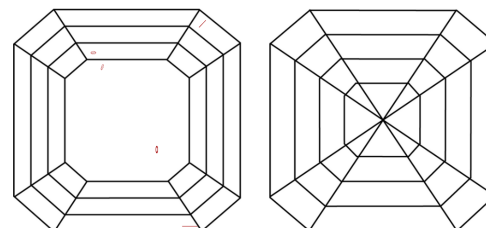


Sample Image Used

GRADING RESULTS

Carat Weight **3.50 CARATS**
Color Grade **FANCY LIGHT YELLOW**
Clarity Grade **VS 2**

CLARITY CHARACTERISTICS



KEY TO SYMBOLS

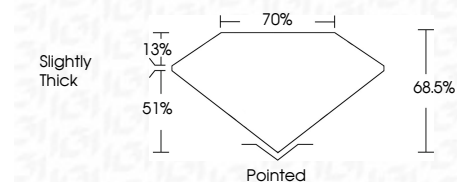
Red symbols indicate internal characteristics.
Green symbols indicate external characteristics.

COLOR

D E F G H I J Faint Very Light Light

CLARITY

| FL | IF | VS ¹⁻² | VS ¹⁻² | SI ¹⁻² | I ¹⁻³ |
|----------|---------------------|-----------------------------|------------------------|-------------------|------------------|
| Flawless | Internally Flawless | Very Very Slightly Included | Very Slightly Included | Slightly Included | Included |



ADDITIONAL GRADING INFORMATION

Polish **EXCELLENT**
Symmetry **EXCELLENT**
Fluorescence **NONE**
Inscription(s) **IGI LG774671586**
Comments: This Laboratory Grown Diamond was created by Chemical Vapor Deposition (CVD) growth process.

ADDITIONAL GRADING INFORMATION

Polish **EXCELLENT**
Symmetry **EXCELLENT**
Fluorescence **NONE**
Inscription(s) **IGI LG774671586**

Comments: This Laboratory Grown Diamond was created by Chemical Vapor Deposition (CVD) growth process.



IGI



February 18, 2026
IGI Report No **LG774671586**
SQUARE EMERALD CUT
3.50 CARATS
Carat Weight **FANCY LIGHT YELLOW**
Color Grade **VS 2**
Clarity Grade **68.5%**
Depth **70%**
Table **Slightly Thick**
Girdle **Pointed**
Culet **EXCELLENT**
Polish **EXCELLENT**
Symmetry **EXCELLENT**
Fluorescence **NONE**
Inscription(s) **IGI LG774671586**
Comments: This Laboratory Grown Diamond was created by Chemical Vapor Deposition (CVD) growth process.