



**ELECTRONIC COPY**

LG774671388  
Report verification at igi.org



February 17, 2026  
IGI Report Number **LG774671388**  
Description **LABORATORY GROWN DIAMOND**  
Shape and Cutting Style **CUT CORNERED  
RECTANGULAR MODIFIED  
BRILLIANT**  
Measurements **8.54 X 6.04 X 4.15 MM**  
**GRADING RESULTS**  
Carat Weight **2.10 CARATS**  
Color Grade **FANCY VIVID PINK**  
Clarity Grade **SI 1**

February 17, 2026  
IGI Report Number **LG774671388**  
Description **LABORATORY GROWN DIAMOND**  
Shape and Cutting Style **CUT CORNERED RECTANGULAR  
MODIFIED BRILLIANT**  
Measurements **8.54 X 6.04 X 4.15 MM**

**GRADING RESULTS**

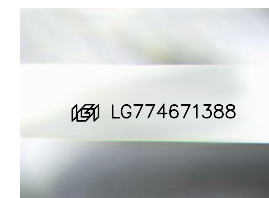
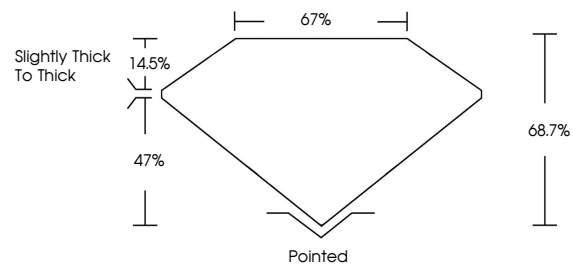
Carat Weight **2.10 CARATS**  
Color Grade **FANCY VIVID PINK**  
Clarity Grade **SI 1**

**ADDITIONAL GRADING INFORMATION**

Polish **VERY GOOD**  
Symmetry **GOOD**  
Fluorescence **STRONG**  
Inscription(s) **IGI LG774671388**

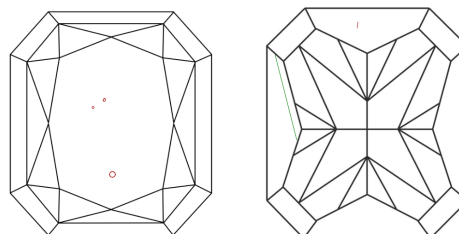
Comments: This Laboratory Grown Diamond was created by Chemical Vapor Deposition (CVD) growth process. Indications of post-growth treatment.

**PROPORTIONS**



Sample Image Used

**CLARITY CHARACTERISTICS**



**KEY TO SYMBOLS**

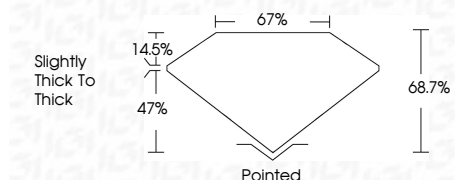
Red symbols indicate internal characteristics.  
Green symbols indicate external characteristics.

**COLOR**

D E F G H I J Faint Very Light Light

**CLARITY**

FL	IF	VS <sup>1-2</sup>	VS <sup>1-2</sup>	SI <sup>1-2</sup>	I <sup>1-3</sup>
Flawless	Internally Flawless	Very Very Slightly Included	Very Slightly Included	Slightly Included	Included



**ADDITIONAL GRADING INFORMATION**

Polish **VERY GOOD**  
Symmetry **GOOD**  
Fluorescence **STRONG**  
Inscription(s) **IGI LG774671388**  
Comments: This Laboratory Grown Diamond was created by Chemical Vapor Deposition (CVD) growth process. Indications of post-growth treatment.



February 17, 2026  
IGI Report No LG774671388  
CUT CORNERED RECT. MODIFIED BRILLIANT  
8.54 X 6.04 X 4.15 MM  
2.10 CARATS  
FANCY VIVID PINK  
SI 1  
68.7%  
47%  
Slightly Thick To Thick  
Pointed  
VERY GOOD  
GOOD  
STRONG  
IGI LG774671388  
Comments: This Laboratory Grown Diamond was created by Chemical Vapor Deposition (CVD) growth process. Indications of post-growth treatment.