



ELECTRONIC COPY

LG774670801
Report verification at igi.org



February 17, 2026
IGI Report Number **LG774670801**
Description **LABORATORY GROWN DIAMOND**
Shape and Cutting Style **HEXAGONAL MODIFIED STEP CUT**
Measurements **14.00 X 4.96 X 3.08 MM**
GRADING RESULTS
Carat Weight **1.68 CARAT**
Color Grade **F**
Clarity Grade **VS 1**

February 17, 2026
IGI Report Number **LG774670801**
Description **LABORATORY GROWN DIAMOND**
Shape and Cutting Style **HEXAGONAL MODIFIED STEP CUT**
Measurements **14.00 X 4.96 X 3.08 MM**

GRADING RESULTS

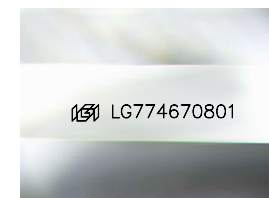
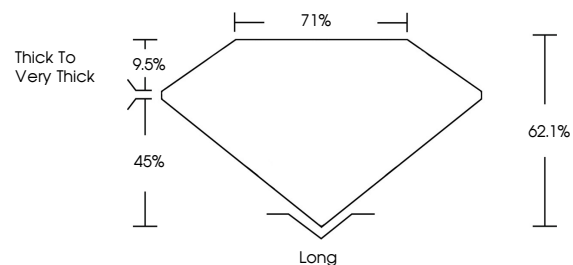
Carat Weight **1.68 CARAT**
Color Grade **F**
Clarity Grade **VS 1**

ADDITIONAL GRADING INFORMATION

Polish **EXCELLENT**
Symmetry **EXCELLENT**
Fluorescence **NONE**
Inscription(s) **IGI LG774670801**

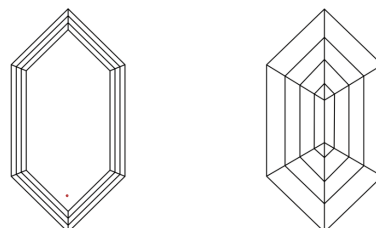
Comments: This Laboratory Grown Diamond was created by Chemical Vapor Deposition (CVD) growth process.
Type IIa

PROPORTIONS



Sample Image Used

CLARITY CHARACTERISTICS



KEY TO SYMBOLS

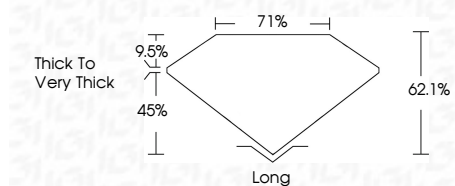
Red symbols indicate internal characteristics.
Green symbols indicate external characteristics.

COLOR

D E F G H I J Faint Very Light Light

CLARITY

FL	IF	VS ¹⁻²	VS ¹⁻²	SI ¹⁻²	I ¹⁻³
Flawless	Internally Flawless	Very Very Slightly Included	Very Slightly Included	Slightly Included	Included



ADDITIONAL GRADING INFORMATION

Polish **EXCELLENT**
Symmetry **EXCELLENT**
Fluorescence **NONE**
Inscription(s) **IGI LG774670801**
Comments: This Laboratory Grown Diamond was created by Chemical Vapor Deposition (CVD) growth process.
Type IIa



February 17, 2026
IGI Report No LG774670801
HEXAGONAL MODIFIED STEP CUT
14.00 X 4.96 X 3.08 MM
1.68 CARAT
F
VS 1
62.1%
71%
Thick to Very Thick
Long
EXCELLENT
EXCELLENT
NONE
IGI LG774670801
Comments: This Laboratory Grown Diamond was created by Chemical Vapor Deposition (CVD) growth process.
Type IIa