



ELECTRONIC COPY

LG774669587
Report verification at igi.org



February 19, 2026
IGI Report Number **LG774669587**
Description **LABORATORY GROWN DIAMOND**
Shape and Cutting Style **CUSHION MODIFIED BRILLIANT**
Measurements **8.68 X 6.75 X 4.53 MM**
GRADING RESULTS
Carat Weight **2.52 CARATS**
Color Grade **FANCY YELLOW**
Clarity Grade **VVS 2**

February 19, 2026
IGI Report Number **LG774669587**
Description **LABORATORY GROWN DIAMOND**
Shape and Cutting Style **CUSHION MODIFIED BRILLIANT**
Measurements **8.68 X 6.75 X 4.53 MM**

GRADING RESULTS

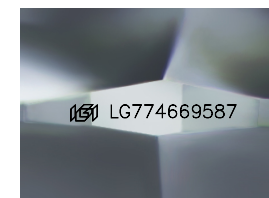
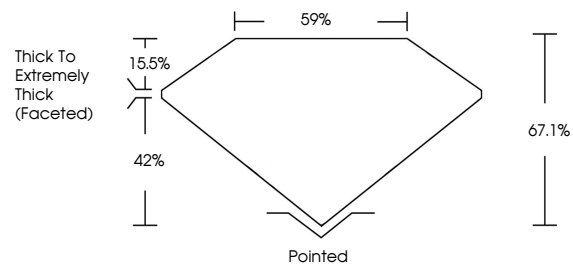
Carat Weight **2.52 CARATS**
Color Grade **FANCY YELLOW**
Clarity Grade **VVS 2**

ADDITIONAL GRADING INFORMATION

Polish **EXCELLENT**
Symmetry **EXCELLENT**
Fluorescence **NONE**
Inscription(s) **(IGI) LG774669587**

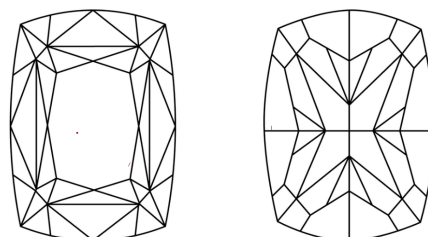
Comments: This Laboratory Grown Diamond was created by Chemical Vapor Deposition (CVD) growth process.

PROPORTIONS



Sample Image Used

CLARITY CHARACTERISTICS



KEY TO SYMBOLS

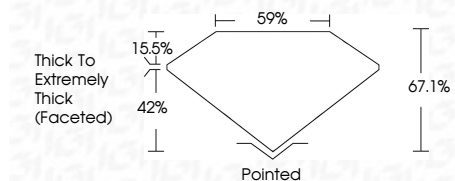
Red symbols indicate internal characteristics.
Green symbols indicate external characteristics.

COLOR

D E F G H I J Faint Very Light Light

CLARITY

| FL | IF | VVS ¹⁻² | VS ¹⁻² | SI ¹⁻² | I ¹⁻³ |
|----------|---------------------|-----------------------------|------------------------|-------------------|------------------|
| Flawless | Internally Flawless | Very Very Slightly Included | Very Slightly Included | Slightly Included | Included |



ADDITIONAL GRADING INFORMATION

Polish **EXCELLENT**
Symmetry **EXCELLENT**
Fluorescence **NONE**
Inscription(s) **(IGI) LG774669587**
Comments: This Laboratory Grown Diamond was created by Chemical Vapor Deposition (CVD) growth process.



IGI



February 19, 2026
IGI Report No LG774669587
CUSHION MODIFIED BRILLIANT
8.68 X 6.75 X 4.53 MM
2.52 CARATS
FANCY YELLOW
VVS 2
67.1%
59%
Thick To Extremely Thick (Faceted)
Pointed
EXCELLENT
EXCELLENT
NONE
(IGI) LG774669587
Comments: This Laboratory Grown Diamond was created by Chemical Vapor Deposition (CVD) growth process.