



**ELECTRONIC COPY**

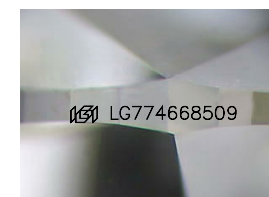
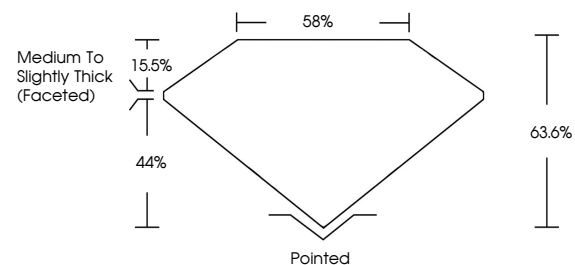
LG774668509  
Report verification at igi.org



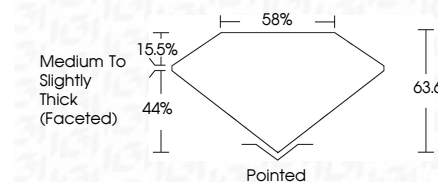
February 13, 2026  
IGI Report Number **LG774668509**  
Description **LABORATORY GROWN DIAMOND**  
Shape and Cutting Style **PEAR BRILLIANT**  
Measurements **13.67 X 8.32 X 5.29 MM**  
**GRADING RESULTS**  
Carat Weight **3.54 CARATS**  
Color Grade **E**  
Clarity Grade **VVS 2**

February 13, 2026  
IGI Report Number **LG774668509**  
Description **LABORATORY GROWN DIAMOND**  
Shape and Cutting Style **PEAR BRILLIANT**  
Measurements **13.67 X 8.32 X 5.29 MM**  
**GRADING RESULTS**  
Carat Weight **3.54 CARATS**  
Color Grade **E**  
Clarity Grade **VVS 2**

**PROPORTIONS**



Sample Image Used



**ADDITIONAL GRADING INFORMATION**

Polish **EXCELLENT**  
Symmetry **EXCELLENT**  
Fluorescence **NONE**  
Inscription(s) **IGI LG774668509**

Comments: This Laboratory Grown Diamond was created by Chemical Vapor Deposition (CVD) growth process.  
Type IIa

**ADDITIONAL GRADING INFORMATION**

Polish **EXCELLENT**  
Symmetry **EXCELLENT**  
Fluorescence **NONE**  
Inscription(s) **IGI LG774668509**  
Comments: This Laboratory Grown Diamond was created by Chemical Vapor Deposition (CVD) growth process.  
Type IIa

**COLOR**

D E F G H I J Faint Very Light Light

**CLARITY**

FL	IF	VS <sup>1-2</sup>	VS <sup>1-2</sup>	SI <sup>1-2</sup>	I <sup>1-3</sup>
Flawless	Internally Flawless	Very Very Slightly Included	Very Slightly Included	Slightly Included	Included



**IGI**



February 13, 2026  
IGI Report No LG774668509  
PEAR BRILLIANT  
13.67 X 8.32 X 5.29 MM  
3.54 CARATS  
E  
VVS 2  
63.6%  
44%  
58%  
Medium to Slightly Thick (Faceted)  
Pointed  
EXCELLENT  
EXCELLENT  
NONE  
IGI LG774668509  
Comments: This Laboratory Grown Diamond was created by Chemical Vapor Deposition (CVD) growth process.  
Type IIa