



ELECTRONIC COPY

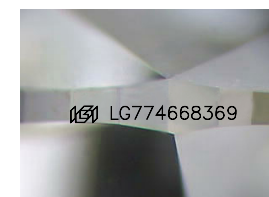
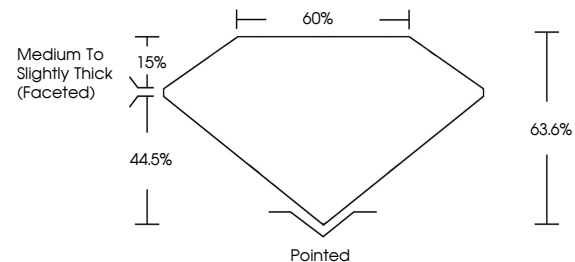
LG774668369
Report verification at igi.org



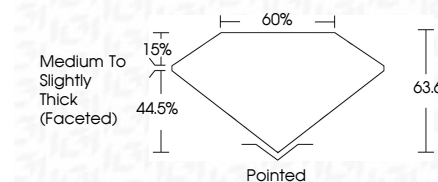
February 13, 2026
IGI Report Number **LG774668369**
Description **LABORATORY GROWN DIAMOND**
Shape and Cutting Style **PEAR BRILLIANT**
Measurements **12.67 X 7.42 X 4.72 MM**
GRADING RESULTS
Carat Weight **2.55 CARATS**
Color Grade **E**
Clarity Grade **VS 1**

February 13, 2026
IGI Report Number **LG774668369**
Description **LABORATORY GROWN DIAMOND**
Shape and Cutting Style **PEAR BRILLIANT**
Measurements **12.67 X 7.42 X 4.72 MM**
GRADING RESULTS
Carat Weight **2.55 CARATS**
Color Grade **E**
Clarity Grade **VS 1**

PROPORTIONS



Sample Image Used



ADDITIONAL GRADING INFORMATION

Polish **EXCELLENT**
Symmetry **EXCELLENT**
Fluorescence **NONE**
Inscription(s) **IGI LG774668369**

Comments: This Laboratory Grown Diamond was created by Chemical Vapor Deposition (CVD) growth process.
Type IIa

ADDITIONAL GRADING INFORMATION

Polish **EXCELLENT**
Symmetry **EXCELLENT**
Fluorescence **NONE**
Inscription(s) **IGI LG774668369**
Comments: This Laboratory Grown Diamond was created by Chemical Vapor Deposition (CVD) growth process.
Type IIa

COLOR

D E F G H I J Faint Very Light Light

CLARITY

FL	IF	VS ¹⁻²	VS ¹⁻²	SI ¹⁻²	I ¹⁻³
Flawless	Internally Flawless	Very Very Slightly Included	Very Slightly Included	Slightly Included	Included



IGI



February 13, 2026
IGI Report No **LG774668369**
PEAR BRILLIANT
12.67 X 7.42 X 4.72 MM
2.55 CARATS
E
VS 1
63.6%
44.5%
60%
Medium to Slightly Thick (Faceted)
Pointed
EXCELLENT
EXCELLENT
NONE
IGI LG774668369
Comments: This Laboratory Grown Diamond was created by Chemical Vapor Deposition (CVD) growth process.
Type IIa