



**ELECTRONIC COPY**

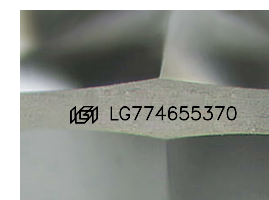
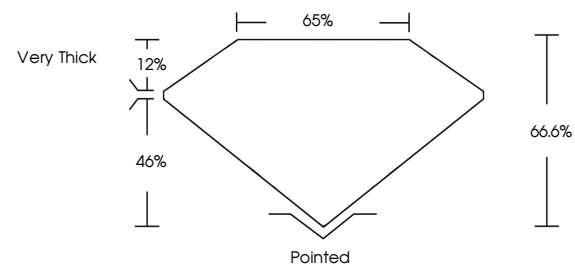
LG774655370  
Report verification at igi.org



March 7, 2026  
IGI Report Number **LG774655370**  
Description **LABORATORY GROWN DIAMOND**  
Shape and Cutting Style **SQUARE CUSHION MODIFIED BRILLIANT**  
Measurements **8.91 X 8.92 X 5.94 MM**  
**GRADING RESULTS**  
Carat Weight **4.73 CARATS**  
Color Grade **FANCY VIVID YELLOW**  
Clarity Grade **VS 2**

March 7, 2026  
IGI Report Number **LG774655370**  
Description **LABORATORY GROWN DIAMOND**  
Shape and Cutting Style **SQUARE CUSHION MODIFIED BRILLIANT**  
Measurements **8.91 X 8.92 X 5.94 MM**

**PROPORTIONS**

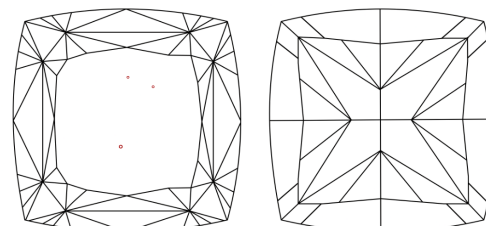


Sample Image Used

**GRADING RESULTS**

Carat Weight **4.73 CARATS**  
Color Grade **FANCY VIVID YELLOW**  
Clarity Grade **VS 2**

**CLARITY CHARACTERISTICS**



**KEY TO SYMBOLS**

Red symbols indicate internal characteristics.  
Green symbols indicate external characteristics.

**ADDITIONAL GRADING INFORMATION**

Polish **EXCELLENT**  
Symmetry **EXCELLENT**  
Fluorescence **NONE**  
Inscription(s) **IGI LG774655370**

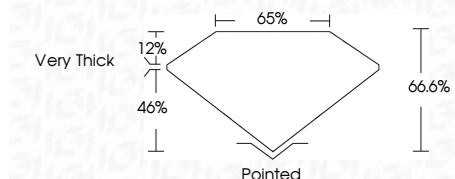
Comments: This Laboratory Grown Diamond was created by Chemical Vapor Deposition (CVD) growth process.

**COLOR**

D E F G H I J Faint Very Light Light

**CLARITY**

FL	IF	VS <sup>1-2</sup>	VV <sup>1-2</sup>	SI <sup>1-2</sup>	I <sup>1-3</sup>
Flawless	Internally Flawless	Very Very Slightly Included	Very Slightly Included	Slightly Included	Included



**ADDITIONAL GRADING INFORMATION**

Polish **EXCELLENT**  
Symmetry **EXCELLENT**  
Fluorescence **NONE**  
Inscription(s) **IGI LG774655370**  
Comments: This Laboratory Grown Diamond was created by Chemical Vapor Deposition (CVD) growth process.



March 7, 2026  
IGI Report No **LG774655370**  
**SQUARE CUSHION MODIFIED BRILLIANT**  
**4.73 CARATS**  
Carat Weight **FANCY VIVID YELLOW**  
Color Grade **VS 2**  
Depth **66.6%**  
Table **65%**  
Girdle **Very Thick**  
Culet **Pointed**  
Polish **EXCELLENT**  
Symmetry **EXCELLENT**  
Fluorescence **NONE**  
Inscription(s) **IGI LG774655370**  
Comments: This Laboratory Grown Diamond was created by Chemical Vapor Deposition (CVD) growth process.