



**ELECTRONIC COPY**

LG774654863  
Report verification at igi.org



March 5, 2026

IGI Report Number **LG774654863**

Description **LABORATORY GROWN DIAMOND**

Shape and Cutting Style **PRINCESS CUT**

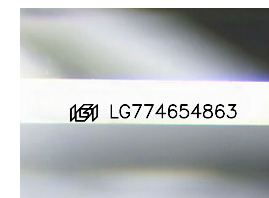
Measurements **6.28 X 6.25 X 4.57 MM**

**GRADING RESULTS**

Carat Weight **1.58 CARAT**

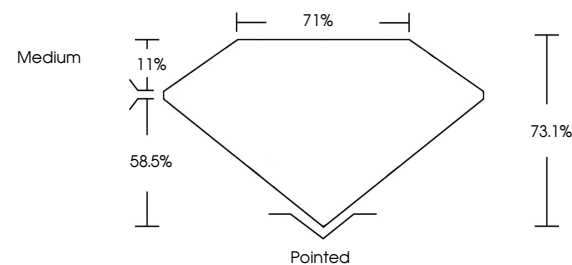
Color Grade **E**

Clarity Grade **VVS 2**

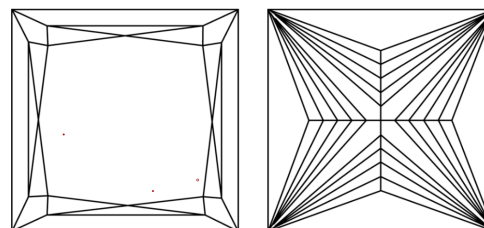


Sample Image Used

**PROPORTIONS**



**CLARITY CHARACTERISTICS**



**KEY TO SYMBOLS**

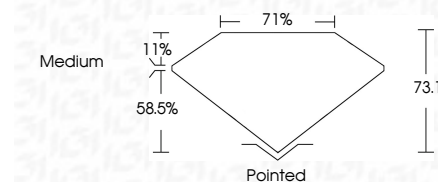
Red symbols indicate internal characteristics.  
Green symbols indicate external characteristics.

**COLOR**

D E F G H I J Faint Very Light Light

**CLARITY**

| FL       | IF                  | VVS <sup>1-2</sup>          | VS <sup>1-2</sup>      | SI <sup>1-2</sup> | I <sup>1-3</sup> |
|----------|---------------------|-----------------------------|------------------------|-------------------|------------------|
| Flawless | Internally Flawless | Very Very Slightly Included | Very Slightly Included | Slightly Included | Included         |



**ADDITIONAL GRADING INFORMATION**

Polish **EXCELLENT**

Symmetry **EXCELLENT**

Fluorescence **NONE**

Inscription(s) **IGI LG774654863**

Comments: This Laboratory Grown Diamond was created by Chemical Vapor Deposition (CVD) growth process.  
Type IIa



**IGI**



March 5, 2026  
IGI Report No LG774654863  
**PRINCESS CUT**  
6.28 X 6.25 X 4.57 MM  
1.58 CARAT  
E  
VVS 2  
73.1%  
71%  
Medium  
Pointed  
EXCELLENT  
EXCELLENT  
NONE  
IGI LG774654863

Comments: This Laboratory Grown Diamond was created by Chemical Vapor Deposition (CVD) growth process.  
Type IIa