



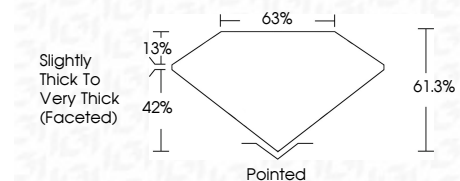
ELECTRONIC COPY

LG774654832
Report verification at igi.org



March 3, 2026
IGI Report Number **LG774654832**
Description **LABORATORY GROWN DIAMOND**
Shape and Cutting Style **OVAL BRILLIANT**
Measurements **8.98 X 6.46 X 3.96 MM**

GRADING RESULTS
Carat Weight **1.50 CARAT**
Color Grade **FANCY VIVID PINK**
Clarity Grade **VS 2**



ADDITIONAL GRADING INFORMATION
Polish **VERY GOOD**
Symmetry **EXCELLENT**
Fluorescence **SLIGHT**
Inscription(s) **IGI LG774654832**
Comments: This Laboratory Grown Diamond was created by Chemical Vapor Deposition (CVD) growth process. Indications of post-growth treatment.



March 3, 2026
IGI Report No LG774654832
OVAL BRILLIANT
8.98 X 6.46 X 3.96 MM
1.50 CARAT
FANCY VIVID PINK
Color Grade
VS 2
Depth 61.6%
Table 65%
Girdle Slightly Thick To Very Thick (Faceted)
Culet Pointed
Polish VERY GOOD
Symmetry EXCELLENT
Fluorescence SLIGHT
Inscription(s) IGI LG774654832
Comments: This Laboratory Grown Diamond was created by Chemical Vapor Deposition (CVD) growth process. Indications of post-growth treatment.

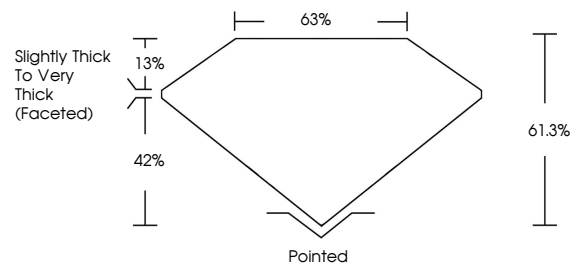
March 3, 2026
IGI Report Number **LG774654832**
Description **LABORATORY GROWN DIAMOND**
Shape and Cutting Style **OVAL BRILLIANT**
Measurements **8.98 X 6.46 X 3.96 MM**

GRADING RESULTS
Carat Weight **1.50 CARAT**
Color Grade **FANCY VIVID PINK**
Clarity Grade **VS 2**

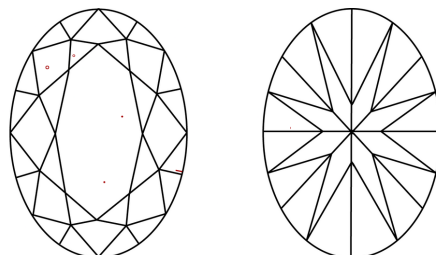
ADDITIONAL GRADING INFORMATION
Polish **VERY GOOD**
Symmetry **EXCELLENT**
Fluorescence **SLIGHT**
Inscription(s) **IGI LG774654832**

Comments: This Laboratory Grown Diamond was created by Chemical Vapor Deposition (CVD) growth process. Indications of post-growth treatment.

PROPORTIONS

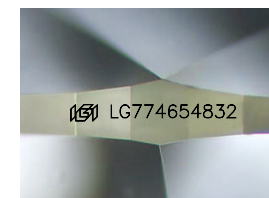


CLARITY CHARACTERISTICS



KEY TO SYMBOLS

Red symbols indicate internal characteristics.
Green symbols indicate external characteristics.



Sample Image Used

COLOR

D E F G H I J Faint Very Light Light

CLARITY

FL	IF	VS ¹⁻²	VS ¹⁻²	SI ¹⁻²	I ¹⁻³
Flawless	Internally Flawless	Very Very Slightly Included	Very Slightly Included	Slightly Included	Included

