



**ELECTRONIC COPY**

LG774653890  
Report verification at igi.org



February 28, 2026  
IGI Report Number **LG774653890**

Description **LABORATORY GROWN DIAMOND**

Shape and Cutting Style **CUT CORNERED  
RECTANGULAR MODIFIED  
BRILLIANT**

Measurements **9.94 X 6.76 X 4.69 MM**

**GRADING RESULTS**

Carat Weight **3.02 CARATS**

Color Grade **FANCY VIVID YELLOW**

Clarity Grade **VVS 2**

February 28, 2026  
IGI Report Number **LG774653890**  
Description **LABORATORY GROWN DIAMOND**  
Shape and Cutting Style **CUT CORNERED RECTANGULAR  
MODIFIED BRILLIANT**  
Measurements **9.94 X 6.76 X 4.69 MM**

**GRADING RESULTS**

Carat Weight **3.02 CARATS**

Color Grade **FANCY VIVID YELLOW**

Clarity Grade **VVS 2**

**ADDITIONAL GRADING INFORMATION**

Polish **EXCELLENT**

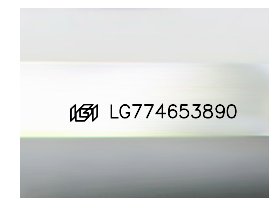
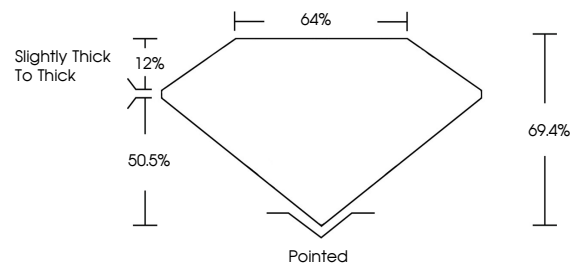
Symmetry **EXCELLENT**

Fluorescence **VERY SLIGHT**

Inscription(s) **IGI LG774653890**

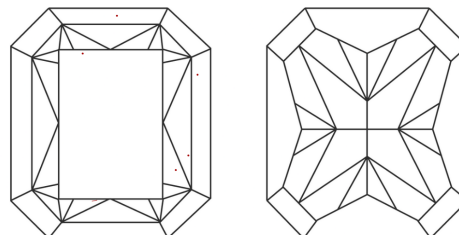
Comments: This Laboratory Grown Diamond was created by Chemical Vapor Deposition (CVD) growth process.

**PROPORTIONS**



Sample Image Used

**CLARITY CHARACTERISTICS**



**KEY TO SYMBOLS**

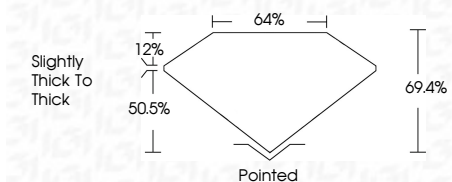
Red symbols indicate internal characteristics.  
Green symbols indicate external characteristics.

**COLOR**

D E F G H I J Faint Very Light Light

**CLARITY**

FL	IF	VVS <sup>1-2</sup>	VS <sup>1-2</sup>	SI <sup>1-2</sup>	I <sup>1-3</sup>
Flawless	Internally Flawless	Very Very Slightly Included	Very Slightly Included	Slightly Included	Included



**ADDITIONAL GRADING INFORMATION**

Polish **EXCELLENT**

Symmetry **EXCELLENT**

Fluorescence **VERY SLIGHT**

Inscription(s) **IGI LG774653890**

Comments: This Laboratory Grown Diamond was created by Chemical Vapor Deposition (CVD) growth process.



**IGI**



February 28, 2026  
IGI Report No LG774653890  
CUT CORNERED RECT. MODIFIED BRILLIANT  
9.94 X 6.76 X 4.69 MM  
3.02 CARATS  
FANCY VIVID YELLOW  
VVS 2  
69.4%  
50.5%  
Slightly thick to thick  
Pointed  
EXCELLENT  
EXCELLENT  
VERY SLIGHT  
IGI LG774653890  
Comments: This Laboratory Grown Diamond was created by Chemical Vapor Deposition (CVD) growth process.