



ELECTRONIC COPY

LG774653886
Report verification at igi.org



February 28, 2026
IGI Report Number **LG774653886**
Description **LABORATORY GROWN DIAMOND**
Shape and Cutting Style **CUSHION MODIFIED BRILLIANT**
Measurements **11.90 X 8.26 X 5.37 MM**
GRADING RESULTS
Carat Weight **4.71 CARATS**
Color Grade **FANCY INTENSE YELLOW**
Clarity Grade **VVS 2**

February 28, 2026
IGI Report Number **LG774653886**
Description **LABORATORY GROWN DIAMOND**
Shape and Cutting Style **CUSHION MODIFIED BRILLIANT**
Measurements **11.90 X 8.26 X 5.37 MM**

GRADING RESULTS

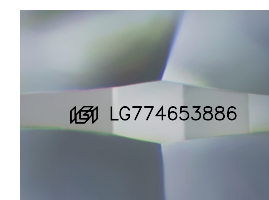
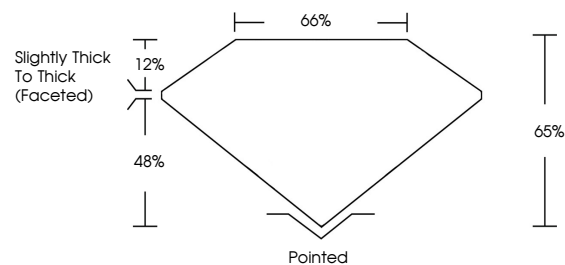
Carat Weight **4.71 CARATS**
Color Grade **FANCY INTENSE YELLOW**
Clarity Grade **VVS 2**

ADDITIONAL GRADING INFORMATION

Polish **EXCELLENT**
Symmetry **EXCELLENT**
Fluorescence **NONE**
Inscription(s) **IGI LG774653886**

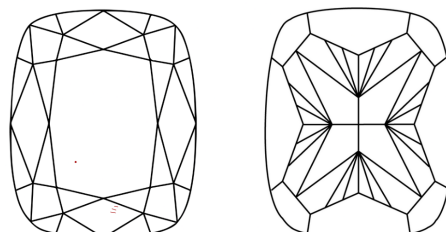
Comments: This Laboratory Grown Diamond was created by Chemical Vapor Deposition (CVD) growth process.

PROPORTIONS



Sample Image Used

CLARITY CHARACTERISTICS



KEY TO SYMBOLS

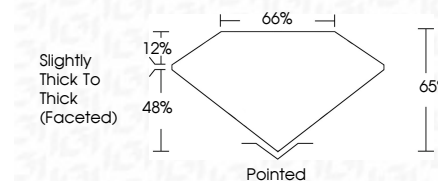
Red symbols indicate internal characteristics.
Green symbols indicate external characteristics.

COLOR

D E F G H I J Faint Very Light Light

CLARITY

FL	IF	VVS ¹⁻²	VS ¹⁻²	SI ¹⁻²	I ¹⁻³
Flawless	Internally Flawless	Very Very Slightly Included	Very Slightly Included	Slightly Included	Included



ADDITIONAL GRADING INFORMATION

Polish **EXCELLENT**
Symmetry **EXCELLENT**
Fluorescence **NONE**
Inscription(s) **IGI LG774653886**
Comments: This Laboratory Grown Diamond was created by Chemical Vapor Deposition (CVD) growth process.



IGI



February 28, 2026
IGI Report No **LG774653886**
CUSHION MODIFIED BRILLIANT
4.71 CARATS
Carat Weight **FANCY INTENSE YELLOW**
Color Grade **VVS 2**
Clarity Grade **65%**
Depth **65%**
Table **Slightly Thick To Thick (Faceted)**
Girdle **Pointed**
Culet **EXCELLENT**
Polish **EXCELLENT**
Symmetry **EXCELLENT**
Fluorescence **NONE**
Inscription(s) **IGI LG774653886**
Comments: This Laboratory Grown Diamond was created by Chemical Vapor Deposition (CVD) growth process.