



ELECTRONIC COPY

LABORATORY GROWN DIAMOND REPORT

LG774652804
Report verification at igi.org

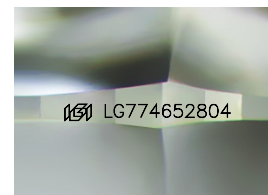
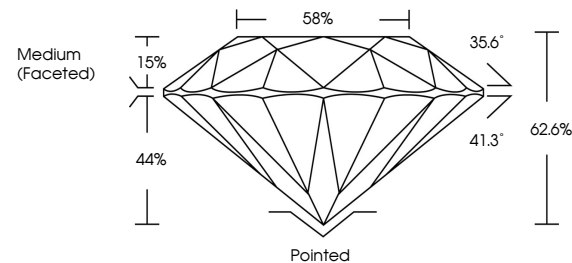
February 13, 2026	
IGI Report Number	LG774652804
Description	LABORATORY GROWN DIAMOND
Shape and Cutting Style	ROUND BRILLIANT
Measurements	6.51 - 6.53 X 4.08 MM
GRADING RESULTS	
Carat Weight	1.07 CARAT
Color Grade	E
Clarity Grade	VVS 1
Cut Grade	EXCELLENT

ADDITIONAL GRADING INFORMATION

Polish	EXCELLENT
Symmetry	EXCELLENT
Fluorescence	NONE
Inscription(s)	 LG774652804

Comments: This Laboratory Grown Diamond was created by Chemical Vapor Deposition (CVD) growth process.
Type IIa

PROPORTIONS



Sample Image Used

COLOR

D E F G H I J Faint Very Light Light

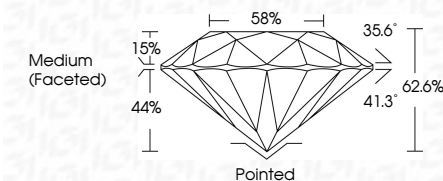
CLARITY

FL	IF	VVS ¹⁻²	VS ¹⁻²	SI ¹⁻²	I ¹⁻³
Flawless	Internally Flawless	Very Very Slightly Included	Very Slightly Included	Slightly Included	Included

LABORATORY GROWN DIAMOND REPORT



February 13, 2026	
IGI Report Number	LG774652804
Description	LABORATORY GROWN DIAMOND
Shape and Cutting Style	ROUND BRILLIANT
Measurements	6.51 - 6.53 X 4.08 MM
GRADING RESULTS	
Carat Weight	1.07 CARAT
Color Grade	E
Clarity Grade	VVS 1
Cut Grade	EXCELLENT



ADDITIONAL GRADING INFORMATION

Polish	EXCELLENT
Symmetry	EXCELLENT
Fluorescence	NONE
Inscription(s)	LG7 LG774652804
<p>Comments: This Laboratory Grown Diamond was created by Chemical Vapor Deposition (CVD) growth process.</p> <p>Type IIa</p>	



© IGI 2020, International Gemological Institute

FD - 10 20



THIS DOCUMENT WAS PRODUCED WITH THE FOLLOWING SECURITY MEASURES: SPECIAL DOCUMENT PAPER, INK SCREENS, WATERMARK, BACKGROUND DESIGNS, HOLOGRAM AND OTHER SECURITY FEATURES NOT LISTED AND DO EXCEED DOCUMENT SECURITY INDUSTRY GUIDELINES

www.igi.org

February 13, 2026	Carat Weight	1.07 CARAT
GI Report No LG77462804	Color Grade	E
ROUND BRILLIANT	Clarity Grade	VVS 1
1.51 - 6.53 X 4.08 MM	Cut Grade	EXCELLENT
	Depth	62.6%
	Table	85%
	Girdle	Medium (Faceted)
	Culet	Pointed
	Polish	EXCELLENT
	Symmetry	EXCELLENT
	Fluorescence	NONE
	Inscriptions(s)	lg91 LG77462804

Comments:
 This Laboratory Grown Diamond was
 created by Chemical Vapor Deposition
 growth process.
 Type IIa