



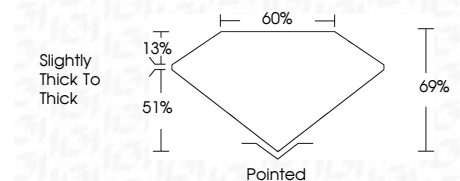
**ELECTRONIC COPY**

LG774651691  
Report verification at igi.org



May 25, 2026  
IGI Report Number **LG774651691**  
Description **LABORATORY GROWN DIAMOND**  
Shape and Cutting Style **HEXAGONAL STEP CUT**  
Measurements **6.77 X 5.68 X 3.92 MM**

**GRADING RESULTS**  
Carat Weight **1.06 CARAT**  
Color Grade **E**  
Clarity Grade **VVS 2**



**ADDITIONAL GRADING INFORMATION**  
Polish **EXCELLENT**  
Symmetry **VERY GOOD**  
Fluorescence **NONE**  
Inscription(s) **IGI LG774651691**  
Comments: This Laboratory Grown Diamond was created by Chemical Vapor Deposition (CVD) growth process. Type IIa



May 25, 2026  
IGI Report No LG774651691  
**HEXAGONAL STEP CUT**  
6.77 X 5.68 X 3.92 MM  
1.06 CARAT  
E  
VVS 2  
69%  
60%  
Slightly thick to thick  
Pointed  
EXCELLENT  
VERY GOOD  
NONE  
IGI LG774651691  
Comments: This Laboratory Grown Diamond was created by Chemical Vapor Deposition (CVD) growth process. Type IIa

**LABORATORY GROWN DIAMOND REPORT**

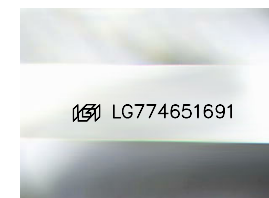
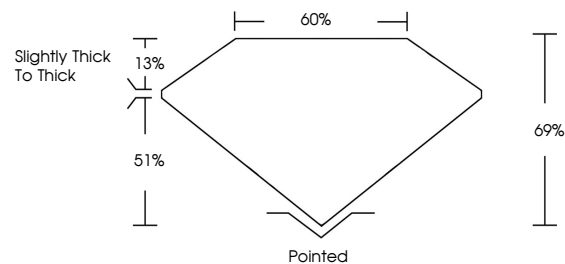
May 25, 2026  
IGI Report Number **LG774651691**  
Description **LABORATORY GROWN DIAMOND**  
Shape and Cutting Style **HEXAGONAL STEP CUT**  
Measurements **6.77 X 5.68 X 3.92 MM**

**GRADING RESULTS**  
Carat Weight **1.06 CARAT**  
Color Grade **E**  
Clarity Grade **VVS 2**

**ADDITIONAL GRADING INFORMATION**  
Polish **EXCELLENT**  
Symmetry **VERY GOOD**  
Fluorescence **NONE**  
Inscription(s) **IGI LG774651691**

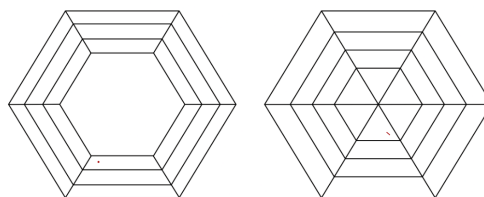
Comments: This Laboratory Grown Diamond was created by Chemical Vapor Deposition (CVD) growth process. Type IIa

**PROPORTIONS**



Sample Image Used

**CLARITY CHARACTERISTICS**



**KEY TO SYMBOLS**

Red symbols indicate internal characteristics.  
Green symbols indicate external characteristics.

**COLOR**

D E F G H I J Faint Very Light Light

**CLARITY**

FL	IF	VVS <sup>1-2</sup>	VS <sup>1-2</sup>	SI <sup>1-2</sup>	I <sup>1-3</sup>
Flawless	Internally Flawless	Very Very Slightly Included	Very Slightly Included	Slightly Included	Included

