



**ELECTRONIC COPY**

LG774651510  
Report verification at igi.org



May 23, 2026

IGI Report Number **LG774651510**

Description **LABORATORY GROWN DIAMOND**

Shape and Cutting Style **EMERALD CUT**

Measurements **7.02 X 4.99 X 3.13 MM**

**GRADING RESULTS**

Carat Weight **1.10 CARAT**

Color Grade **FANCY VIVID BLUE**

Clarity Grade **VS 1**

**LABORATORY GROWN DIAMOND REPORT**

May 23, 2026

IGI Report Number **LG774651510**

Description **LABORATORY GROWN DIAMOND**

Shape and Cutting Style **EMERALD CUT**

Measurements **7.02 X 4.99 X 3.13 MM**

**GRADING RESULTS**

Carat Weight **1.10 CARAT**

Color Grade **FANCY VIVID BLUE**

Clarity Grade **VS 1**

**ADDITIONAL GRADING INFORMATION**

Polish **EXCELLENT**

Symmetry **EXCELLENT**

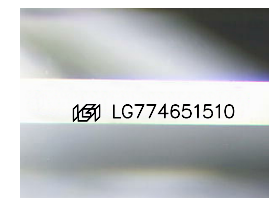
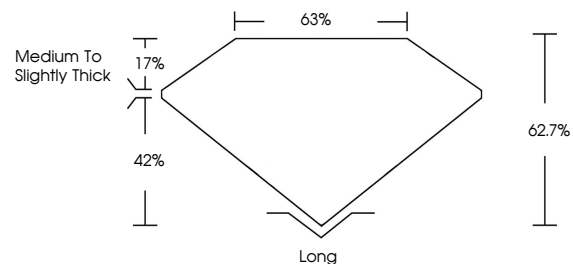
Fluorescence **NONE**

Inscription(s) **IGI LG774651510**

Comments: This Laboratory Grown Diamond was created by Chemical Vapor Deposition (CVD) growth process.

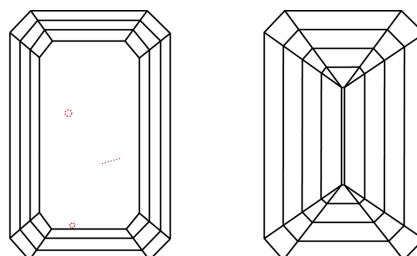
Indications of post-growth treatment.

**PROPORTIONS**



Sample Image Used

**CLARITY CHARACTERISTICS**



**KEY TO SYMBOLS**

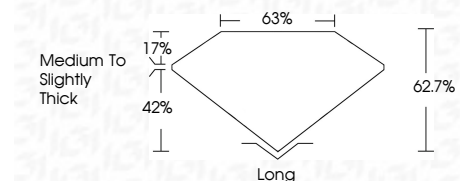
Red symbols indicate internal characteristics.  
Green symbols indicate external characteristics.

**COLOR**

D E F G H I J Faint Very Light Light

**CLARITY**

FL	IF	VS <sup>1-2</sup>	VS <sup>1-2</sup>	SI <sup>1-2</sup>	I <sup>1-3</sup>
Flawless	Internally Flawless	Very Very Slightly Included	Very Slightly Included	Slightly Included	Included



**ADDITIONAL GRADING INFORMATION**

Polish **EXCELLENT**

Symmetry **EXCELLENT**

Fluorescence **NONE**

Inscription(s) **IGI LG774651510**

Comments: This Laboratory Grown Diamond was created by Chemical Vapor Deposition (CVD) growth process. Indications of post-growth treatment.



May 23, 2026  
IGI Report No LG774651510  
EMERALD CUT

1.10 CARAT  
7.02 X 4.99 X 3.13 MM

FANCY VIVID BLUE  
Color Grade

VS 1  
Clarity Grade

62.7%  
Depth

63%  
Table

Medium to Slightly Thick  
Girdle

Long  
Culet

EXCELLENT  
Polish

EXCELLENT  
Symmetry

NONE  
Fluorescence

IGI LG774651510  
Inscription(s)

Comments: This Laboratory Grown Diamond was created by Chemical Vapor Deposition (CVD) growth process. Indications of post-growth treatment.