



ELECTRONIC COPY

LG774651476
Report verification at igi.org



May 20, 2026

IGI Report Number **LG774651476**

Description **LABORATORY GROWN DIAMOND**

Shape and Cutting Style **CUT CORNERED
RECTANGULAR MODIFIED
BRILLIANT**

Measurements **10.89 X 7.26 X 4.84 MM**

GRADING RESULTS

Carat Weight **3.57 CARATS**

Color Grade **FANCY INTENSE YELLOW**

Clarity Grade **VVS 2**

LABORATORY GROWN DIAMOND REPORT

May 20, 2026

IGI Report Number **LG774651476**

Description **LABORATORY GROWN DIAMOND**

Shape and Cutting Style **CUT CORNERED RECTANGULAR
MODIFIED BRILLIANT**

Measurements **10.89 X 7.26 X 4.84 MM**

GRADING RESULTS

Carat Weight **3.57 CARATS**

Color Grade **FANCY INTENSE YELLOW**

Clarity Grade **VVS 2**

ADDITIONAL GRADING INFORMATION

Polish **EXCELLENT**

Symmetry **EXCELLENT**

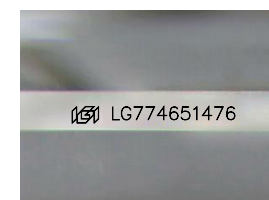
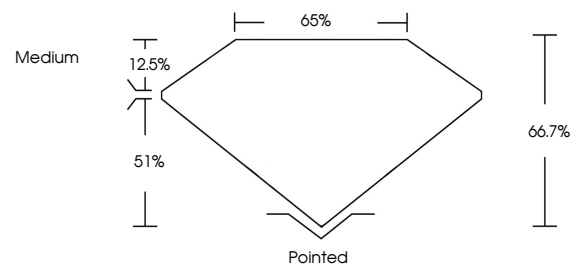
Fluorescence **NONE**

Inscription(s) **IGI LG774651476**

Comments: This Laboratory Grown Diamond was created by Chemical Vapor Deposition (CVD) growth process.

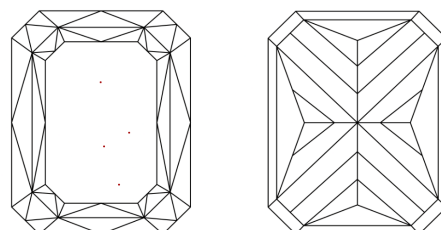
Indications of post-growth treatment.

PROPORTIONS



Sample Image Used

CLARITY CHARACTERISTICS



KEY TO SYMBOLS

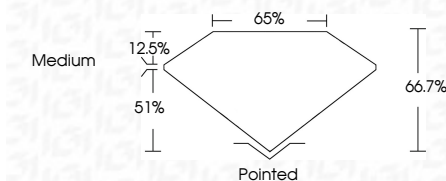
Red symbols indicate internal characteristics.
Green symbols indicate external characteristics.

COLOR

D E F G H I J Faint Very Light Light

CLARITY

FL	IF	VVS ¹⁻²	VS ¹⁻²	SI ¹⁻²	I ¹⁻³
Flawless	Internally Flawless	Very Very Slightly Included	Very Slightly Included	Slightly Included	Included



ADDITIONAL GRADING INFORMATION

Polish **EXCELLENT**

Symmetry **EXCELLENT**

Fluorescence **NONE**

Inscription(s) **IGI LG774651476**

Comments: This Laboratory Grown Diamond was created by Chemical Vapor Deposition (CVD) growth process. Indications of post-growth treatment.



IGI



May 20, 2026
IGI Report No LG774651476
CUT CORNERED RECT. MODIFIED BRILLIANT
10.89 X 7.26 X 4.84 MM
3.57 CARATS
FANCY INTENSE YELLOW
VVS 2
66.7%
65%
Medium
Pointed
EXCELLENT
EXCELLENT
NONE
IGI LG774651476

Comments: This Laboratory Grown Diamond was created by Chemical Vapor Deposition (CVD) growth process. Indications of post-growth treatment.