



**ELECTRONIC COPY**

LG774651007  
Report verification at igi.org



May 15, 2026

IGI Report Number **LG774651007**

Description **LABORATORY GROWN DIAMOND**

Shape and Cutting Style **CUT CORNERED  
RECTANGULAR MIXED CUT**

Measurements **9.88 X 7.02 X 4.85 MM**

**GRADING RESULTS**

Carat Weight **3.50 CARATS**

Color Grade **D**

Clarity Grade **VVS 1**

**LABORATORY GROWN DIAMOND REPORT**

May 15, 2026

IGI Report Number **LG774651007**

Description **LABORATORY GROWN DIAMOND**

Shape and Cutting Style **CUT CORNERED RECTANGULAR  
MIXED CUT**

Measurements **9.88 X 7.02 X 4.85 MM**

**GRADING RESULTS**

Carat Weight **3.50 CARATS**

Color Grade **D**

Clarity Grade **VVS 1**

**ADDITIONAL GRADING INFORMATION**

Polish **EXCELLENT**

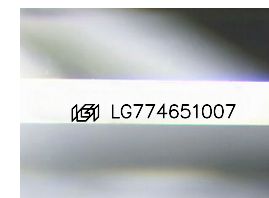
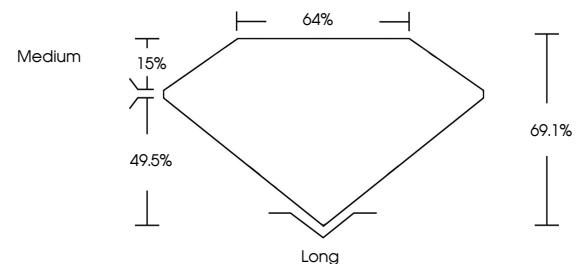
Symmetry **EXCELLENT**

Fluorescence **NONE**

Inscription(s) **IGI LG774651007**

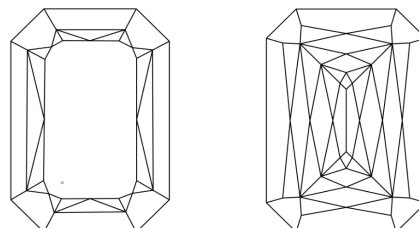
Comments: This Laboratory Grown Diamond was created by Chemical Vapor Deposition (CVD) growth process. Type IIa

**PROPORTIONS**



Sample Image Used

**CLARITY CHARACTERISTICS**



**KEY TO SYMBOLS**

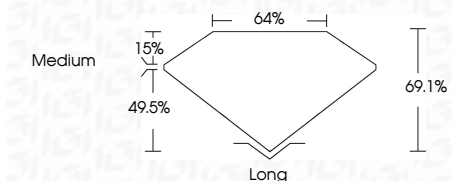
Red symbols indicate internal characteristics.  
Green symbols indicate external characteristics.

**COLOR**

D E F G H I J Faint Very Light Light

**CLARITY**

FL	IF	VVS <sup>1-2</sup>	VS <sup>1-2</sup>	SI <sup>1-2</sup>	I <sup>1-3</sup>
Flawless	Internally Flawless	Very Very Slightly Included	Very Slightly Included	Slightly Included	Included



**ADDITIONAL GRADING INFORMATION**

Polish **EXCELLENT**

Symmetry **EXCELLENT**

Fluorescence **NONE**

Inscription(s) **IGI LG774651007**

Comments: This Laboratory Grown Diamond was created by Chemical Vapor Deposition (CVD) growth process. Type IIa



**IGI**



May 15, 2026  
IGI Report No LG774651007  
CUT CORNERED RECT. MIXED CUT  
3.50 CARATS  
D  
3.50 CARATS  
D  
VVS 1  
69.1%  
49.5%  
Medium  
Long  
EXCELLENT  
EXCELLENT  
NONE  
IGI LG774651007  
Comments: This Laboratory Grown Diamond was created by Chemical Vapor Deposition (CVD) growth process. Type IIa