



ELECTRONIC COPY

LG774650355
Report verification at igi.org



April 18, 2026

IGI Report Number **LG774650355**

Description **LABORATORY GROWN DIAMOND**

Shape and Cutting Style **OVAL MIXED CUT**

Measurements **9.71 X 7.02 X 4.40 MM**

GRADING RESULTS

Carat Weight **2.03 CARATS**

Color Grade **E**

Clarity Grade **VS 1**

April 18, 2026

IGI Report Number **LG774650355**

Description **LABORATORY GROWN DIAMOND**

Shape and Cutting Style **OVAL MIXED CUT**

Measurements **9.71 X 7.02 X 4.40 MM**

GRADING RESULTS

Carat Weight **2.03 CARATS**

Color Grade **E**

Clarity Grade **VS 1**

ADDITIONAL GRADING INFORMATION

Polish **EXCELLENT**

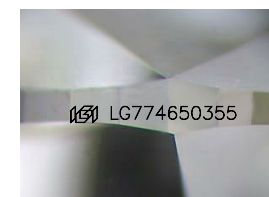
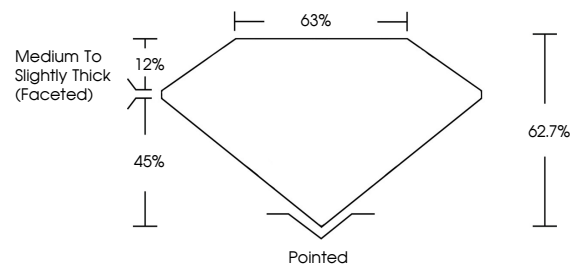
Symmetry **EXCELLENT**

Fluorescence **NONE**

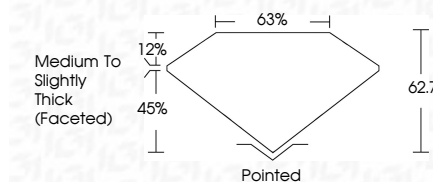
Inscription(s) **IGI LG774650355**

Comments: This Laboratory Grown Diamond was created by Chemical Vapor Deposition (CVD) growth process. Type IIa

PROPORTIONS



Sample Image Used



COLOR

D E F G H I J Faint Very Light Light

CLARITY

FL	IF	VS ¹⁻²	VS ¹⁻²	SI ¹⁻²	I ¹⁻³
Flawless	Internally Flawless	Very Very Slightly Included	Very Slightly Included	Slightly Included	Included

ADDITIONAL GRADING INFORMATION

Polish **EXCELLENT**

Symmetry **EXCELLENT**

Fluorescence **NONE**

Inscription(s) **IGI LG774650355**

Comments: This Laboratory Grown Diamond was created by Chemical Vapor Deposition (CVD) growth process. Type IIa



April 18, 2026
IGI Report No LG774650355
OVAL MIXED CUT
9.71 X 7.02 X 4.40 MM
2.03 CARATS
E
Color Grade
Clarity Grade VS 1
Depth 62.7%
Table 12%
Girdle 45%
Medium to Slightly Thick (Faceted)
Culet Pointed
Polish EXCELLENT
Symmetry EXCELLENT
Fluorescence NONE
Inscription(s) IGI LG774650355
Comments: This Laboratory Grown Diamond was created by Chemical Vapor Deposition (CVD) growth process. Type IIa